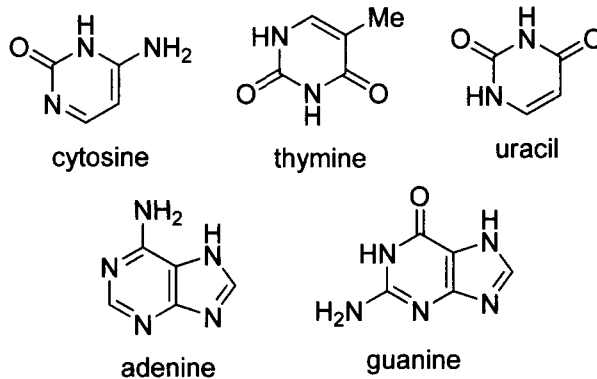


Melatonin regulates circadian rhythms, most noticeably sleep, whereas tryptamine is closely related to melatonin and the amino acid tryptophan.

The double helix of DNA, the code of life, comprises two base pairs: adenine/thymine (A/T) and cytosine/guanine (C/G).



By adding the ubiquitous sugar fragments, we are left with nucleic acids containing pyrimidine bases, including cytosine, thymine, and uracil and purine bases such as adenine and guanine.

