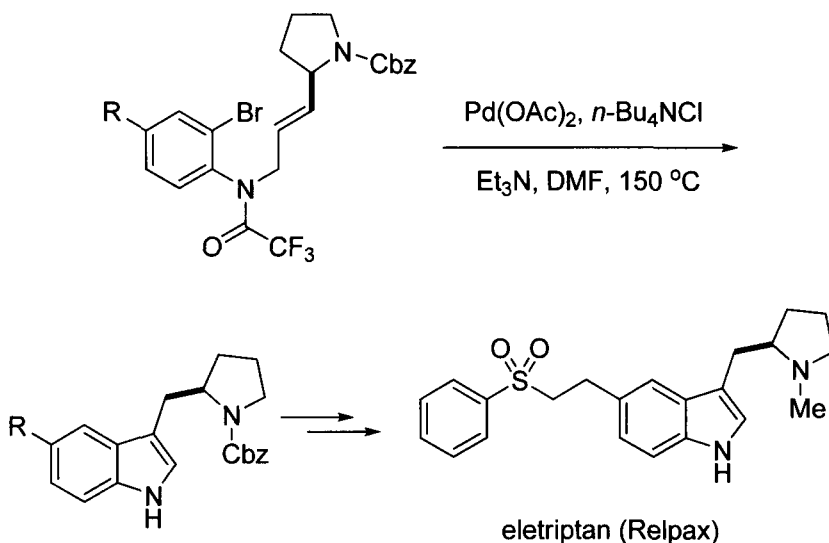
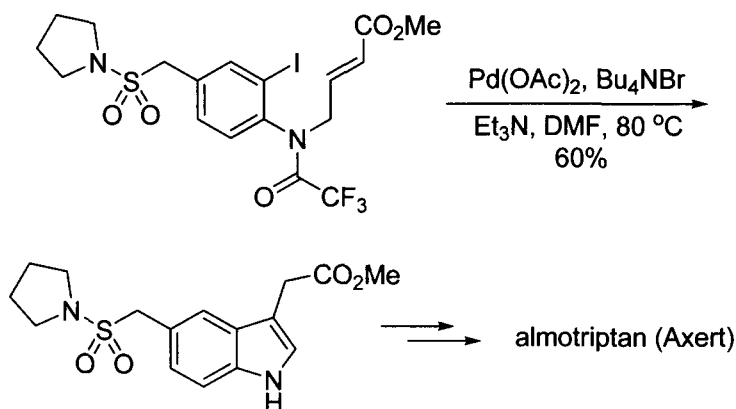


In synthesis of eletriptan (Relpax), Pfizer's triptan for the treatment of migraine, Macor again used the Mori-Ban indole synthesis as the key operation to assemble the indole ring.²² Jeffrey's conditions were once again employed to transform the *o*-bromo-*N*-allylaniline into the indole core.



In a synthesis of another anti-migraine agent almotriptan (Axert), the Mori-Ban indole synthesis was the key operation to construct the indole core.¹⁷ Under Jeffrey's conditions, the *o*-iodo-*N*-allylaniline cyclized with concomitant deprotection of the trifluoroacetyl group to form the indole-acetic methyl ester.



3.3.3 Larock Indole Synthesis

Larock and co-workers described the one-step Pd-catalyzed reaction of *o*-haloanilines with internal alkynes to give indoles.²³ This reaction involves