

Xintong Mixture (*Xintong Koufuye*) – 心通口服液

Sample source

Commercially available Xintong Mixture

Chemical reference substances

Puerarin (National Institute for the Control of Pharmaceutical and Biological Products, Batch number: 110752-200209)

Preparation of test solution

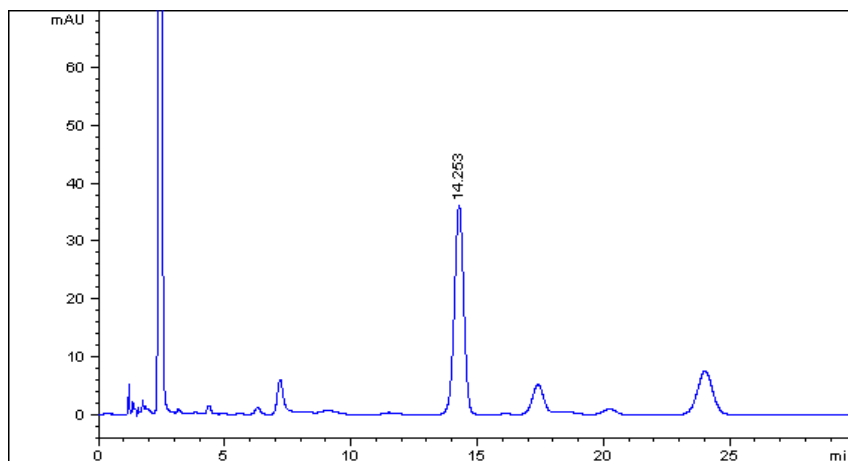
Accurately measure 5 mL of the mixture, transfer to a 50 mL volumetric flask, dilute with acetone to volume and mix well. Centrifuge, accurately measure 5 mL of the supernatant liquid, transfer to a 50 mL volumetric flask, dilute with 30 % methanol to volume and mix well.

Chromatographic conditions

- Column: ZORBAX SB C18 4.6×150 mm, 5 µm (883975-902)
- Column temperature: 25 °C
- Mobile phase: methanol-water (21:79)
- Detector wavelength: 250 nm
- Flow rate: 1.0 mL/min
- Injection volume: 5 µL

Chromatographic system

- Agilent 1200 Series quaternary pump with vacuum degasser
- Agilent 1200 Series high-performance autosampler
- Agilent 1200 Series thermostated column compartment
- Agilent 1200 Series diode-array detector
- System control through Agilent ChemStation revision B.01.01



Components	k'	Ret Time (min)	Height (mAU)	Area (mAU*s)	n	USP T _r
Puerarin	8.502	14.253	36.15	928.8	7274	0.97