

# Giant Knotweed (*Rhizoma et Radix Polygoni Cuspidati*) – 虎杖

## Sample source

Commercially available Giant Knotweed Rhizome

## Chemical reference substances

Polydatin (National Institute for the Control of Pharmaceutical and Biological Products, Batch number 111575-200301)

## Preparation of test solution

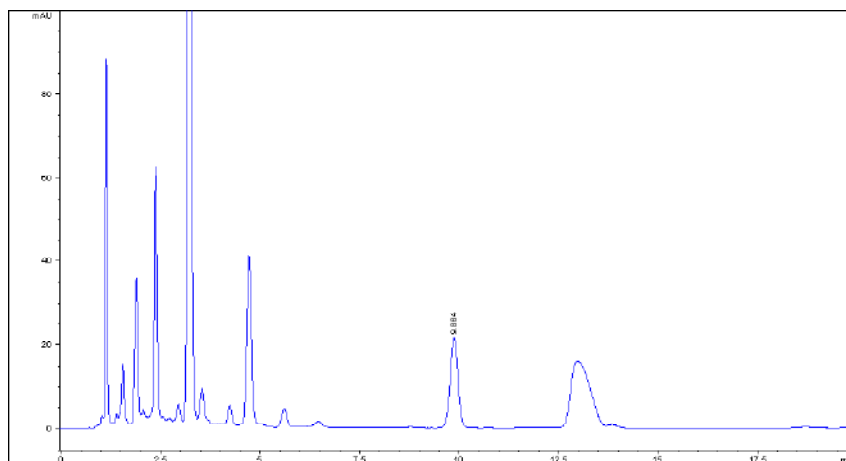
Accurately weigh 0.1 g of the powder, accurately add 25 mL of dilute ethanol and weigh, heat under reflux for 30 minutes, cool and weigh again, replenish the lost solvent with dilute ethanol and mix well. Filter, and use the filtrate as the test solution.

## Chromatographic conditions

- Column: ZORBAX SB C18 4.6×150 mm, 5 µm (883975-902)
- Column temperature: 25 °C
- Mobile phase: methanol-water (25:75)
- Detector wavelength: 306 nm
- Flow rate: 1.0 mL/min

## Chromatographic system

- Agilent 1200 Series quaternary pump with vacuum degasser
- Agilent 1200 Series high-performance autosampler
- Agilent 1200 Series thermostated column compartment
- Agilent 1200 Series diode-array detector
- System control through Agilent ChemStation revision B.01.01



Components	k'	Ret Time (min)	Height (mAU)	Area (mAU*s)	n	USP T <sub>r</sub>
Polydatin		9.864	21.69	298.8	12095	1.01