

Poppy Capsules (*Pericarpium Papaveris*) – 罂粟壳

Sample source

Commercially available Poppy Capsule

Chemical reference substances

Morphine (National Institute for the Control of Pharmaceutical and Biological Products)

Preparation of test solution

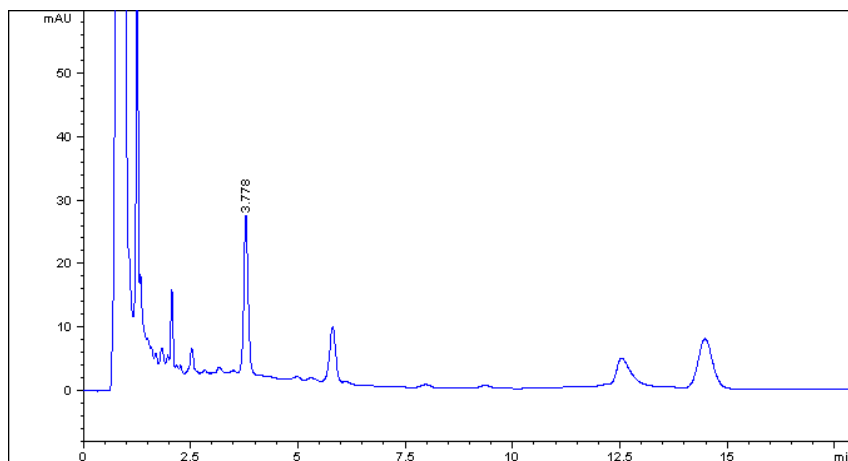
Accurately weigh 0.5 g of the powder in a 50 mL volumetric flask, accurately add 25 mL of 20 % methanol and 5 % acetic acid, stopper tightly, weigh, treat ultrasonically for 30 minutes, allow to cool, weigh again and replenish the lost solvent with 20 % methanol and 5% acetic acid, mix well and stand, take the supernatant, filter through a millipore membrane (0.45 μm), use the filtrate as the test solution.

Chromatographic conditions

- Column: ZORBAX XDB C8, 4.6 \times 150 mm, 5 μm (993967-906)
- Column temperature: 35 $^{\circ}\text{C}$
- Mobile phase: acetonitrile-0.01 mol/L potassium dihydrogen phosphate-5 mmol/L heptane sodium sulfonate (18:40:42)
- Detector wavelength: 220 nm
- Flow rate: 1.0 mL/min
- Injection volume: 2 μL

Chromatographic system

- Agilent 1200 Series quaternary pump with vacuum degasser
- Agilent 1200 Series high-performance autosampler
- Agilent 1200 Series thermostated column compartment
- Agilent 1200 Series diode-array detector
- System control through Agilent ChemStation revision B.01.01



Components	k'	Ret Time (min)	Height (mAU)	Area (mAU*s)	n	USP T _r
Morphine	2.778	3.778	24.54	176.2	6948	1.04