

Zhenggu Tincture (*Zhenggu Shui*) – 正骨水

Sample source

Commercially available Zhenggu Tincture

Chemical reference substances

Paeonol (National Institute for the Control of Pharmaceutical and Biological Products, Batch number: 0708-200205)

Preparation of test solution

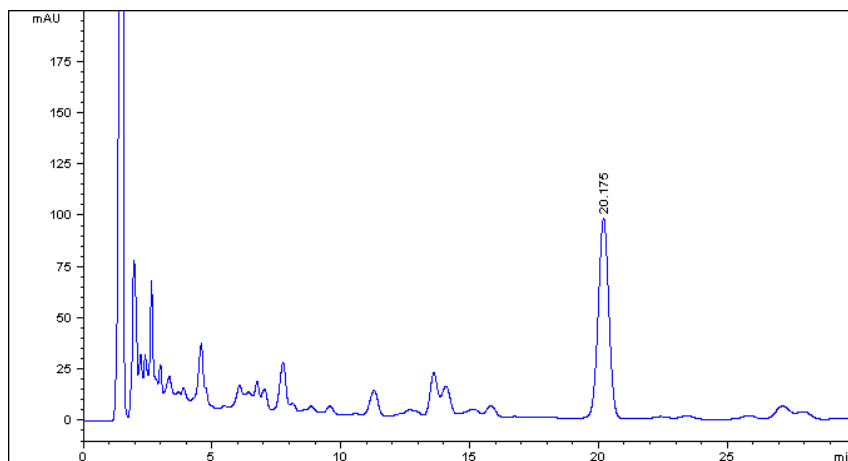
Accurately measure 10 mL of the tincture in a 25 mL volumetric flask, dilute with ethanol to volume and mix well.

Chromatographic conditions

- Column: ZORBAX SB C18 4.6×150 mm, 5 μm (883975-902)
- Column temperature: 25 °C
- Mobile phase: acetonitrile-water-triethylamine-phosphoric acid (28:72:0.1:0.1)
- Detector wavelength: 274 nm
- Flow rate: 1.0 mL/min
- Injection volume: 10 μL

Chromatographic system

- Agilent 1200 Series quaternary pump with vacuum degasser
- Agilent 1200 Series high-performance autosampler
- Agilent 1200 Series thermostated column compartment
- Agilent 1200 Series variable wavelength detector
- System control through Agilent ChemStation revision B.01.01



Components	k'	Ret Time (min)	Height (mAU)	Area (mAU*s)	n	USP T _r
Paeonol	15.813	20.175	97.30	2754.0	11819	0.99