

# Fenghan Kesou Granules (*Fenghan Kesou Keli*) – 风寒咳嗽颗粒

## Sample source

Commercially available Fenghan Kesou Granules

## Chemical reference substances

Ephedrine hydrochloride (National Institute for the Control of Pharmaceutical and Biological Products)

## Preparation of test solution

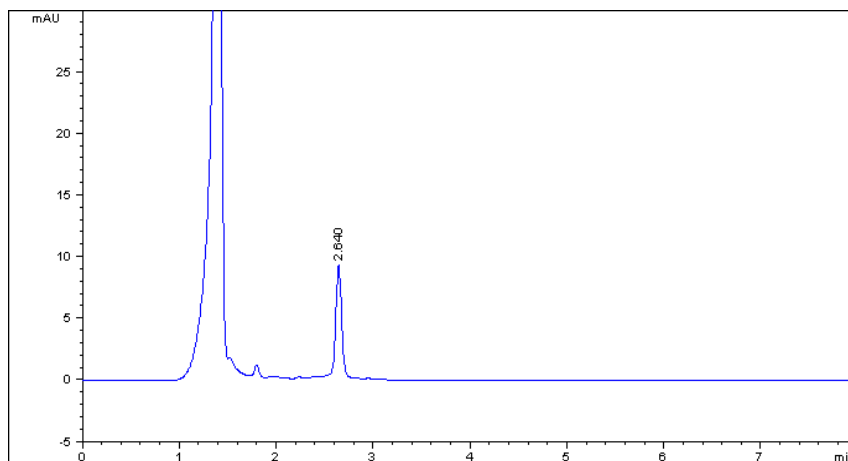
Grind a quantity of granules to a fine powder, accurately weigh 3 g of the powder in a round-bottom flask, add 120 mL of a 5 mol/L solution of sodium hydroxide, stir well, add 7.5 g of sodium chloride, treat ultrasonically for 30 minutes. Add 50 mL of water and distill, collect about 95 mL of the distillate in a 100 mL volumetric flask containing 5 mL of 0.5 mol/L hydrochloric acid, add water to volume, shake well, accurately measure 10 mL of the solution into a 25 mL volumetric flask. Add 1 mL of periodic acid solution (0.25 g/10 mL) and 2.5 mL of 0.25 mol/L sodium hydroxide, and mix well. Allow to stand for 30 minutes, add 0.5 mol/L solution of hydrochloric acid to adjust to pH 7, then add methanol to volume, mix well.

## Chromatographic conditions

- Column: ZORBAX SB C18 4.6×150 mm, 5 µm (883975-902)
- Column temperature: 25 °C
- Mobile phase: methanol-water (64:36)
- Detector wavelength: 254 nm
- Flow rate: 1.0 mL/min
- Injection volume: 10 µL

## Chromatographic system

- Agilent 1200 Series quaternary pump with vacuum degasser
- Agilent 1200 Series high-performance autosampler
- Agilent 1200 Series thermostated column compartment
- Agilent 1200 Series variable wavelength detector
- System control through Agilent ChemStation revision B.01.01



Components	k'	Ret Time (min)	Height (mAU)	Area (mAU*s)	n	USP T <sub>r</sub>
Ephedrine	1.2	2.640	9.00	37.4	9697	1.02