

# Rehmannia Root (*Radix Rehmanniae*) – 地 黄

## Sample source

Commercially available Rehmannia Root

## Chemical reference substances

Catalpol (National Institute for the Control of Pharmaceutical and Biological Products, Batch number 110808-200304)

## Preparation of test solution

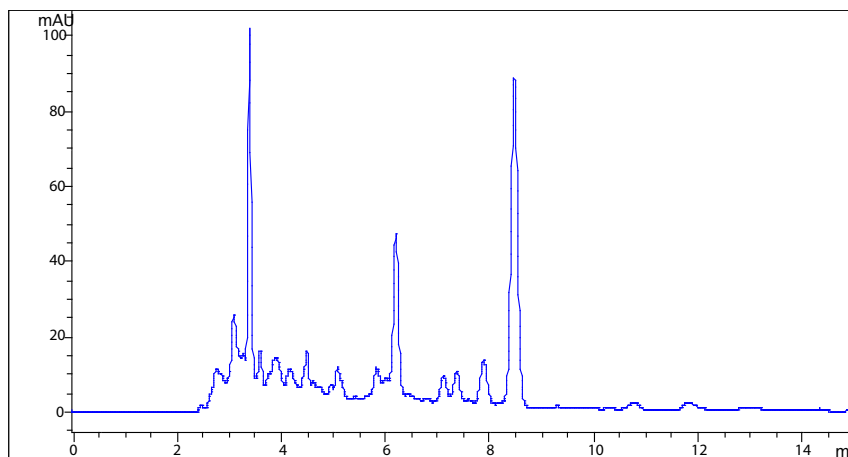
Accurately weigh 2.0 g of the powder in a round-bottom flask, accurately add 100 mL of methanol. Heat under reflux for 1.5 hours, allow to cool, filter. Collect filtrate in a 100 mL volumetric flask, wash several times with 15 mL of methanol, combine the washings in the volumetric flask, add methanol to the volume and mix well. Accurately measure 20 mL of the filtrate and evaporate to almost dryness. Dissolve the residue in the mobile phase, transfer to a 10 mL volumetric flask, dilute to volume with the same solvent and mix well.

## Chromatographic conditions

- Column: Agilent TC-C18, 4.6×150 mm, 5 μm (518935-902)
- Column temperature: 25 °C
- Mobile phase: acetonitrile-0.15% phosphoric acid (1:99)
- Detector wavelength: 210 nm ±8nm
- Reference wavelength: 360 nm ±50 nm

## Chromatographic system

- Agilent 1200 Series quaternary pump with vacuum degasser
- Agilent 1200 Series high-performance autosampler
- Agilent 1200 Series thermostated column compartment
- Agilent 1200 Series diode-array detector
- System control through Agilent ChemStation revision B.01.01



Components	k'	Ret Time (min)	Height (mAU)	Rs	n	USP T <sub>r</sub>
Catalpol	2.231	7.882	11.52	2.48	16911	0.99