

Dogbane Leaf (*Folium Apocyni Veneti*) – 罗布麻叶

Sample source

Commercially available Dogbane Leaf

Chemical reference substances

Quercetin (National Institute for the Control of Pharmaceutical and Biological Products, Batch number 0081-9905)

Preparation of test solution

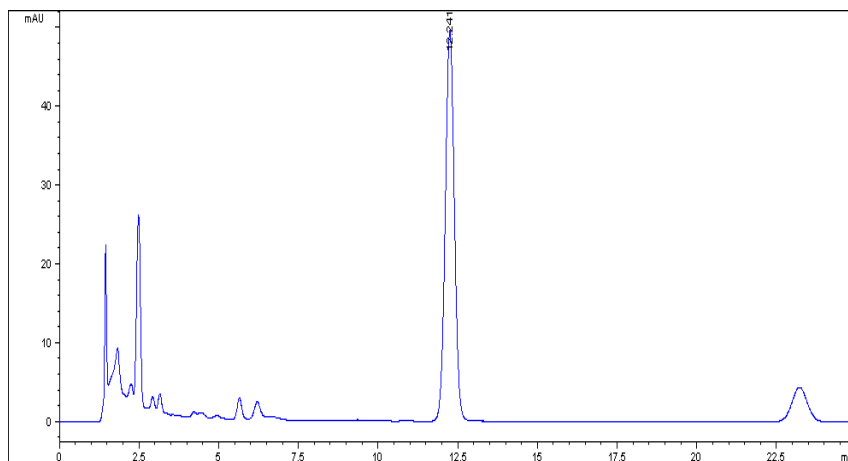
Accurately weigh 0.5 g of the powder in a stoppered conical flask, accurately add 50 mL of 80 % methanol, weigh, heat under reflux on a water bath for 1 hour, cool, weigh again, replenish the lost weight with 80 % methanol, mix well and filter. Accurately measure 10 mL of the filtrate, add 1 mL of hydrochloric acid, heat under reflux on a water bath at 90 °C for 60 minutes, cool immediately, transfer to a 25 mL volumetric flask, dilute with 80 % methanol to volume, mix well.

Chromatographic conditions

- Column: ZORBAX XDB C8 4.6×150 mm, 5 µm (993967-906)
- Column temperature: 30 °C
- Mobile phase: methanol-0.4 % phosphoric acid (45:55)
- Detector wavelength: 360 nm
- Flow rate: 1.0 mL/min
- Injection volume: 10 µL

Chromatographic system

- Agilent 1200 Series quaternary pump with vacuum degasser
- Agilent 1200 Series high-performance autosampler
- Agilent 1200 Series thermostated column compartment
- Agilent 1200 Series variable wavelength detector
- System control through Agilent ChemStation revision B.01.01



Components	k'	Ret Time (min)	Height (mAU)	Area (mAU*s)	n	USP T _r
Quercetin	7.160	12.241	48.77	984.4	8740	1.02