

Shaoshangling Tincture (*Shaoshangling Ding*) – 烧伤灵酊

Sample source

Commercially available Shaoshangling Tincture

Chemical reference substances

Emodin (National Institute for the Control of Pharmaceutical and Biological Products, Batch number 110756-200210)

Preparation of test solution

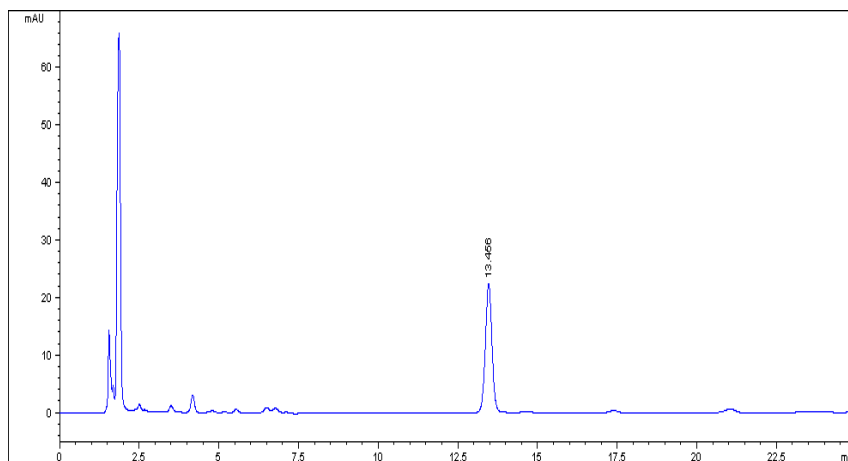
Accurately measure 2 mL of the tincture in an evaporating dish, add 1 g of silica gel (60-160 mesh), evaporate to dryness on a warm water bath. Apply to a column packed with dry silica gel (2 g, 15 mm in inner diameter), elute in vacuum with 90 mL of a mixture of petroleum ether (60-90 °C), formate acetate and formic acid (100:100:2), collect the eluent, evaporate to dry, dissolve the residue in a quantity of methanol. Transfer to a 100 mL volumetric flask, dilute with methanol to volume and mix well.

Chromatographic conditions

- Column: ZORBAX SB C18 4.6×150 mm, 5 µm (883975-902)
- Column temperature: 25 °C
- Mobile phase: methanol-0.1% phosphoric acid (70:30)
- Detector wavelength: 254 nm
- Flow rate: 1.0 mL/min
- Injection volume: 5 µL

Chromatographic system

- Agilent 1200 Series quaternary pump with vacuum degasser
- Agilent 1200 Series high-performance autosampler
- Agilent 1200 Series thermostated column compartment
- Agilent 1200 Series variable wavelength detector
- System control through Agilent ChemStation revision B.01.01



Components	k'	Ret Time (min)	Height (mAU)	Area (mAU*s)	n	USP T _r
Emodin	7.971	13.456	22.37	321.0	21030	1.01