

# Duyiwei Capsules (*Capsule Radix Lamio-phlomidies Ratatae*)

## 独一味胶囊

### Sample source

Commercially available Duyiwei Capsules

### Chemical reference substances

luteolin (National Institute for the Control of Pharmaceutical and Biological Products, Batch number 111520-200201)

### Preparation of test solution

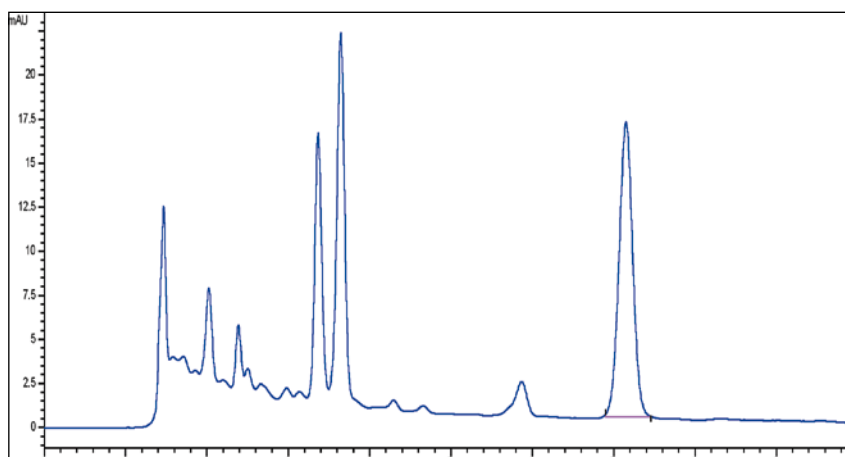
Accurately weigh 0.06 g of the powder contents in a 10 mL volumetric flask, add 20 mL of 2.5 mol/L solution of hydrochloric acid in methanol, treat ultrasonically for 30 minutes, allow to cool. Dilute with a 2.5 mol/L solution of hydrochloric acid in methanol to volume, mix well and filter. Accurately transfer 4 mL of the filtrate to a 10 mL round-bottomed flask, heat on a water bath at 90 °C for 30 minutes and allow to cool. Transfer to a 10 mL volumetric flask, dilute with methanol to volume, mix well, filter, and use the filtrate as the test solution.

### Chromatographic conditions

- Column: ZORBAX SB C18 4.6×150 mm, 5 µm (883975-902)
- Column temperature: 35 °C
- Mobile phase: methanol-0.4 % phosphoric acid solution (50:50)
- Detector wavelength: 350 nm
- Flow rate: 1.0 mL/min

### Chromatographic system

- Agilent 1200 Series quaternary pump with vacuum degasser
- Agilent 1200 Series high-performance autosampler
- Agilent 1200 Series thermostated column compartment
- Agilent 1200 Series variable wavelength detector
- System control through Agilent ChemStation revision B.01.01



Components	k'	Ret Time (min)	Height (mAU)	Area (mAU*s)	n	USP T <sub>r</sub>
Luteolin	4.959	7.151	16.74	195.6	8946	1.00