

# Danle Capsules (*Danle Jiaonang*) – 胆乐胶囊

## Sample source

Commercially available Danle Capsules

## Chemical reference substances

hesperidin (National Institute for the Control of Pharmaceutical and Biological Products, Batch number 110721-200211)

## Preparation of test solution

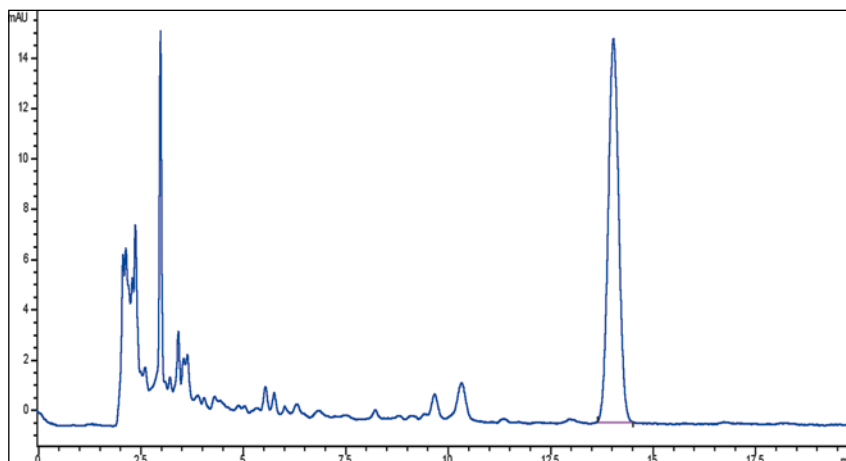
Grind a quantity of the capsule contents to a fine powder and mix well. Accurately weigh 0.3 g of the powder in a Soxhlet extractor, add a quantity of methanol, heat under reflux on a water bath for 6 hours. Transfer the extract to a 100 mL volumetric flask, dilute with methanol to volume and mix well. Filter through a millipore membrane (0.45 µm), and use the filtrate as test solution.

## Chromatographic conditions

- Column: ZORBAX SB C18 4.6×250 mm, 5 µm (880975-902)
- Column temperature: 25 °C
- Mobile phase: acetonitrile-0.2 % phosphoric acid (20:80)
- Detector wavelength: 284 nm
- Flow rate: 1.0 mL/min

## Chromatographic system

- Agilent 1200 Series quaternary pump with vacuum degasser
- Agilent 1200 Series high-performance autosampler
- Agilent 1200 Series thermostated column compartment
- Agilent 1200 Series variable wavelength detector
- System control through Agilent ChemStation revision B.01.01



Components	k'	Ret Time (min)	Height (mAU)	Area (mAU*s)	n	USP T <sub>r</sub>
Geniposide	3.295	5.154	46.33	444.1	6790	0.99