

Sanqi Tablets (*Sanqi Pian*) – 三七片

Sample source

Commercially available Sanqi Tablets

Chemical reference substances

1. Ginsenoside Rg1, 2. Ginsenoside Rb1, 3. Notoginsenoside R1 (National Institute for the Control of Pharmaceutical and Biological Products, Batch number 1. 110745-200312, 3. 110703-200322)

Preparation of test solution

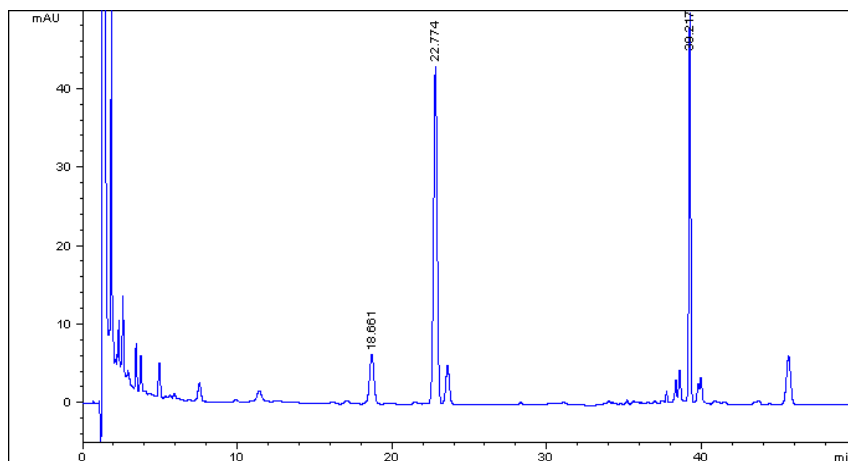
Accurately weigh 10 tablets, grind to a fine powder, accurately weigh 0.8 g in a stoppered conical flask, add 50 mL of methanol, weigh, allow to stand overnight, heat under reflux on a water bath at 80 °C for 2 hours, allow to cool, weigh again, replenish the lost weight with methanol, shake well, filter and use the filtrate as the test solution.

Chromatographic conditions

- Column: ZORBAX XDB C18 4.6×150 mm, 5 μm (993967-902)
- Column temperature: 25 °C
- Mobile phase: A: water, B acetonitrile; 0~12min, 19%B; 12~30 min, 19~25%B; 30~36min, 25~33%B
- Detector wavelength: 203 nm
- Flow rate: 1.0 mL/min
- Injection volume: 5 μL

Chromatographic system

- Agilent 1200 Series quaternary pump with vacuum degasser
- Agilent 1200 Series high-performance autosampler
- Agilent 1200 Series thermostated column compartment
- Agilent 1200 Series variable wavelength detector
- System control through Agilent ChemStation revision B.01.01



Components	k'	Ret Time (min)	Height (mAU)	Area (mAU*s)	n	USP T _r
Notoginsenoside R1	11.44	18.661	6.24	122.1	20967	0.96
Ginsenoside Rg1	14.183	22.774	42.96	693.2	46900	0.97
Ginsenoside Rb1	25.145	39.217	49.55	400.9	563641	0.95