

Chinese Cork Tree (*Cortex Phellodendri Chinensis*) – 黄柏

Sample source

Commercially available Chinese Cork Tree

Chemical reference substances

Berberine hydrochloride (National Institute for the Control of Pharmaceutical and Biological Products, Batch number 110713-200208)

Preparation of test solution

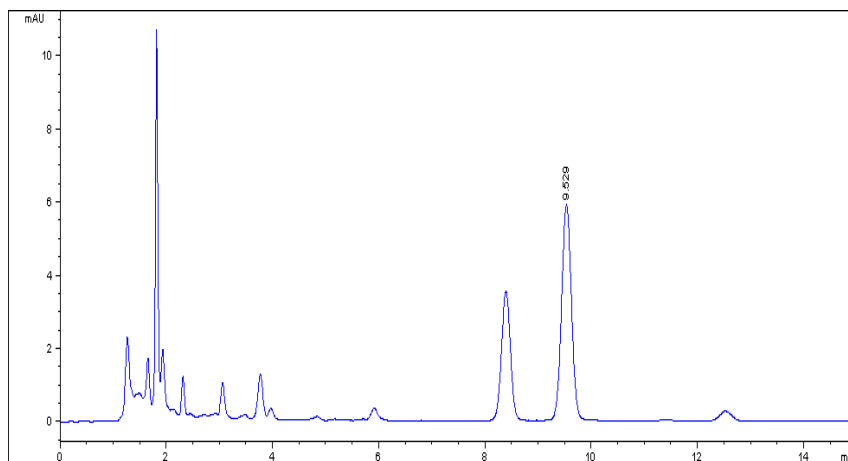
Accurately weigh 0.1 g of the powder in a 100 mL volumetric flask, add 80 mL of the mobile phase, treat ultrasonically for 40 minutes, allow to cool, dilute with the mobile phase to volume, mix well, filter, and use the filtrate as the test solution.

Chromatographic conditions

- Column: ZORBAX SB C18 4.6×150 mm, 5 μm (883975-902)
- Column temperature: 25 °C
- Mobile phase: acetonitrile-0.1 % phosphoric acid (contain 0.1 % sodium dodecylsulfonate)(50:50)
- Detector wavelength: 265 nm
- Flow rate: 1.0 mL/min

Chromatographic system

- Agilent 1200 Series quaternary pump with vacuum degasser
- Agilent 1200 Series high-performance autosampler
- Agilent 1200 Series thermostated column compartment
- Agilent 1200 Series variable wavelength detector
- System control through Agilent ChemStation revision B.01.01



| Components | k' | Ret Time (min) | Height (mAU) | Area (mAU*s) | n | USP T _r |
|------------|-------|----------------|--------------|--------------|-------|--------------------|
| Berberine | 6.941 | 9.529 | 5.89 | 75.3 | 13019 | 1.02 |