

Shortscape Fleabane Herb (*Herba Lysimachiae*) – 灯盏细辛

Sample source

Commercially available Shortscape Fleabane Herb (Yunnan province)

Chemical reference substances

Scutellarin (National Institute for the Control of Pharmaceutical and Biological Products, Batch number 842-200102)

Preparation of test solution

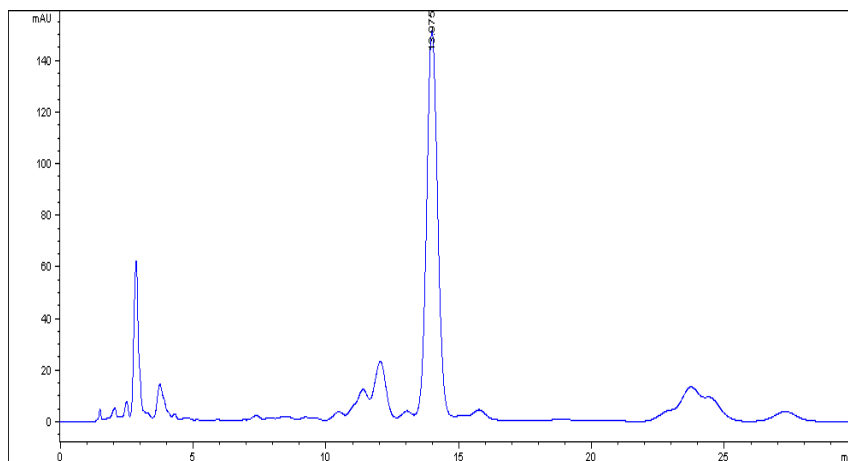
Accurately weigh 0.5 g of the powder in a Soxhlet extractor, add an appropriate quantity of chloroform, heat under reflux until the extract is colorless and discard the chloroform extract. Evaporate the solvent, transfer the residue and the filter to a stoppered conical flask, accurately add 50 mL of methanol, weigh, allow to stand for 1 hour, heat under reflux on a water bath for 1 hour, allow to cool, weigh again, and replenish the lost weight with methanol, mix well, filter. Accurately measure 25 mL of the successive filtrate, evaporate to dryness, dissolve the residue in methanol and transfer to a 10 mL volumetric flask, dilute with methanol to volume, mix well. Filter and use the filtrate as the test solution.

Chromatographic conditions

- Column: ZORBAX SB C18 4.6×150 mm, 5 μm (883975-902)
- Column temperature: 25 °C
- Mobile phase: methanol-0.1 % phosphoric acid (35:65)
- Detector wavelength: 335 nm
- Flow rate: 1.0 mL/min
- Injection volume: 5 μL

Chromatographic system

- Agilent 1200 Series quaternary pump with vacuum degasser
- Agilent 1200 Series high-performance autosampler
- Agilent 1200 Series thermostated column compartment
- Agilent 1200 Series diode-array detector
- System control through Agilent ChemStation revision B.01.01



Components	k'	Ret Time (min)	Height (mAU)	Area (mAU*s)	n	USP T _r
Scutellarin	8.317	13.975	149.34	4238.4	5589	1.05