

Liquorice Liquid Extract (*Extractum Glycyrrhizae Liquidum*)

甘草流浸膏

Sample source

Commercially available prepared slices of *Radix Glycyrrhizae*

Chemical reference substances

Ammonium glycyrrhizinate (National Institute for the Control of Pharmaceutical and Biological Products, Batch number 0731-9704)

Preparation of test solution

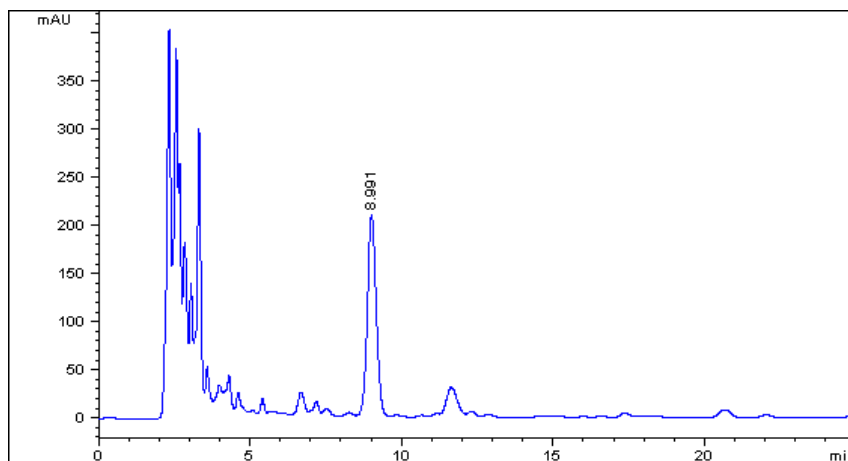
To 0.45 Kg prepared slices of *Radix Glycyrrhizae* add 4500 ml of water, decoct 3 times, 2 hours for each time. Combine the decoctions, stand over night to deposit any precipitate and concentrate the supernatant to a thick extract. Measure accurately 1 ml in a 25 ml volumetric flask, add 10 ml of the mobile phase, ultrasonicate for 30 minutes, cool, add the mobile phase to volume, shake well and filter. Use the successive filtrate as the test solution.

Chromatographic conditions

- Column: ZORBAX SB C18 4.6×250 mm, 5 µm (880975-902)
- Column temperature: 25 °C
- Mobile phase: methanol-0.2mol/L ammonium acetate-glacial acetic acid (67:33:1)
- Detector wavelength: 250 nm
- Flow rate: 1.0 ml/min

Chromatographic system

- Agilent 1200 Series quaternary pump with vacuum degasser
- Agilent 1200 Series high-performance autosampler
- Agilent 1200 Series thermostated column compartment
- Agilent 1200 Series variable wavelength detector
- System control through Agilent ChemStation revision B.01.01



Components	k'	Ret Time (min)	Height (mAU)	Area (mAU*s)	n	USP T _r
Glycyrrhizinic acid	2.596	8.991	210.78	4365.3	4570	1.05