

Clove Fruit (*Fructus Caryophylli*) – 母丁香

Sample source

Commercially available Clove Fruit (Beijing)

Chemical reference substances

Eugenol (National Institute for the Control of Pharmaceutical and Biological Products, Batch number 110725-200209)

Preparation of test solution

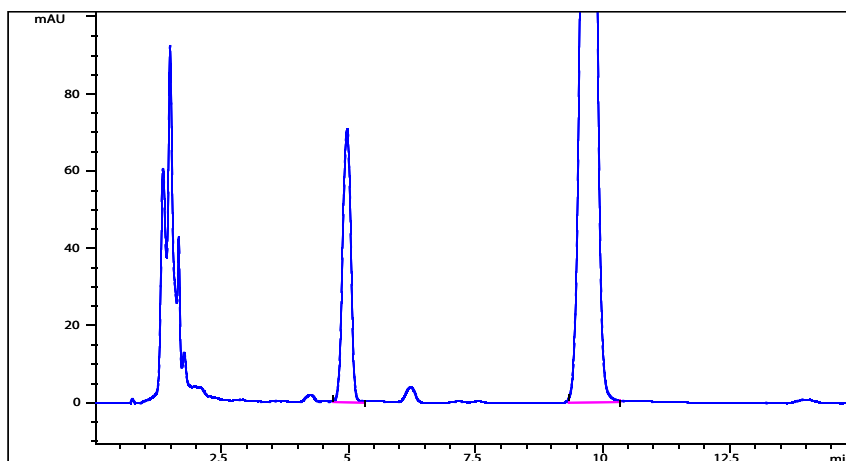
Accurately weigh 0.3 g of the powder in a 25 mL volumetric flask, add dehydrated ethanol to volume, and allow to soak for 24 hours. Mix well, filter, and use the filtrate as the test solution.

Chromatographic conditions

- Column: ZORBAX SB C18 4.6×150 mm, 5 µm (883975-902)
- Column temperature: 35 °C
- Mobile phase: methanol-water (13:8)
- Detector wavelength: 280 nm
- Flow rate: 1.0 mL/min
- Injection volume: 10 µL

Chromatographic system

- Agilent 1200 Series quaternary pump with vacuum degasser
- Agilent 1200 Series high-performance autosampler
- Agilent 1200 Series thermostated column compartment
- Agilent 1200 Series variable wavelength detector
- System control through Agilent ChemStation revision B.01.01



Components	k'	Ret Time (min)	Height (mAU)	Area (mAU*s)	n	USP T _r
Eugenol	3.140	4.968	70.90	798.1	4317	0.96