

# Dyers Woad Leaf (*Folium Isatidis*) – 大青叶

## Sample source

Commercially available Dyers Woad Leaf

## Chemical reference substances

Indirubin (National Institute for the Control of Pharmaceutical and Biological Products, Batch number 717-200204)

## Preparation of test solution

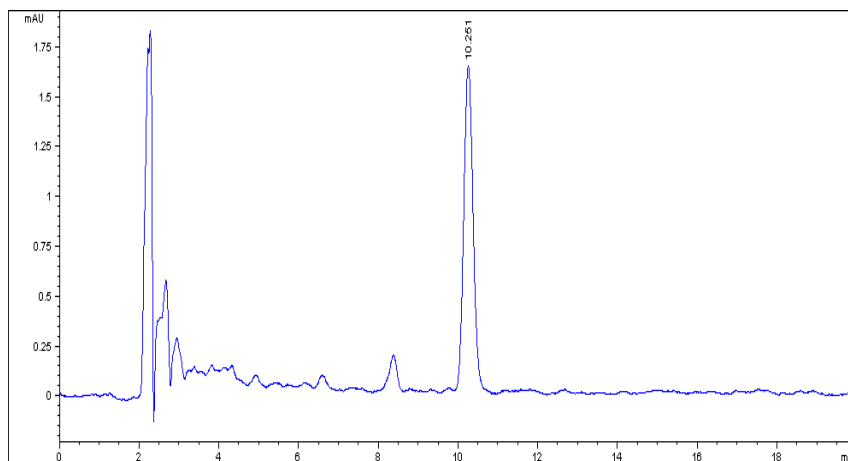
Accurately weigh 0.25 g of the fine powder in a Soxhlet extractor, add an appropriate quantity of chloroform to extract for 15 hours, heat under reflux until the extract is colorless. Evaporate the solvent to dryness, dissolve the residue in methanol and transfer to a 100 mL volumetric flask, add methanol to volume, mix well, filter, and use the filtrate as test solution.

## Chromatographic conditions

- Column: ZORBAX Extend C18, 4.6×250 mm, 5 µm (770450-902)
- Column temperature: 25 °C
- Mobile phase: methanol-water (72:28)
- Detector wavelength: 289 nm
- Flow rate: 1.0 mL/min
- Injection volume: 20 µL

## Chromatographic system

- Agilent 1200 Series quaternary pump with vacuum degasser
- Agilent 1200 Series high-performance autosampler
- Agilent 1200 Series thermostated column compartment
- Agilent 1200 Series variable wavelength detector
- System control through Agilent ChemStation revision B.01.01



Components	k'	Ret Time (min)	Height (mAU)	Area (mAU*s)	n	USP T <sub>r</sub>
Indirubin	3.100	10.251	1.62	25.9	9503	1.08