

Sanchi (*Radix et Rhizoma Notoginseng*) – 三七

Sample source

Commercially available Sanchi (Yunnan province)

Chemical reference substances

1. Notoginsenoside R₁, 2. Ginsenoside Rg₁, 3. Ginsenoside Rb₁ (National Institute for the Control of Pharmaceutical and Biological Products, Batch number 1. 110745-200312, 2. 110703-200322)

Preparation of test solution

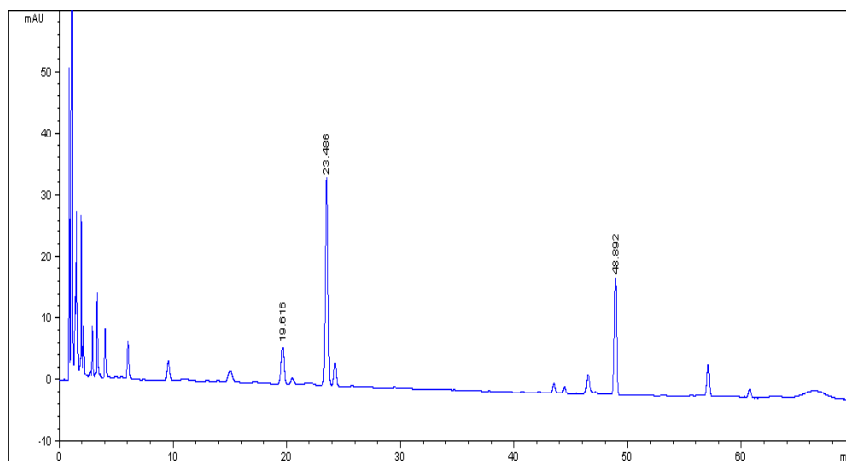
Accurately weigh 0.6 g of the powder, accurately add 50 mL of methanol, weigh and allow to stand overnight. Heat under reflux to boiling on a water bath at 80 °C for 2 hours, allow to cool and weigh again, replenish the lost solvent with methanol and mix well. Filter and use the filtrate as the test solution.

Chromatographic conditions

- Column: ZORBAX SB C18 4.6×150 mm, 5 μm (993975-902)
- Column temperature: 25 °C
- Mobile phase: A: acetonitrile, B: water; 0~12 min, A: 19 %; 12~60 min, A: 19~36 %
- Detector wavelength: 203 nm
- Flow rate: 1.0 mL/min
- Injection volume: 5 μL

Chromatographic system

- Agilent 1200 Series quaternary pump with vacuum degasser
- Agilent 1200 Series high-performance autosampler
- Agilent 1200 Series thermostated column compartment
- Agilent 1200 Series variable wavelength detector
- System control through Agilent ChemStation revision B.01.01



Components	k'	Ret Time (min)	Height (mAU)	Area (mAU*s)	n	USP T _r
Notoginsenoside R ₁	15.346	19.616	5.82	104.1	27372	0.97
ginsenoside Rg ₁	18.571	23.486	33.52	536.3	50869	0.97
ginsenoside Rb ₁	39.743	48.892	18.74	266.7	277635	0.94