

Tongtian Mixture (*Tongtian Koufuye*) – 通天口服液

Sample source

Commercially available Tongtian Mixture

Chemical reference substances

paeoniflorin (National Institute for the Control of Pharmaceutical and Biological Products, Batch number: 110736-200220)

Preparation of test solution

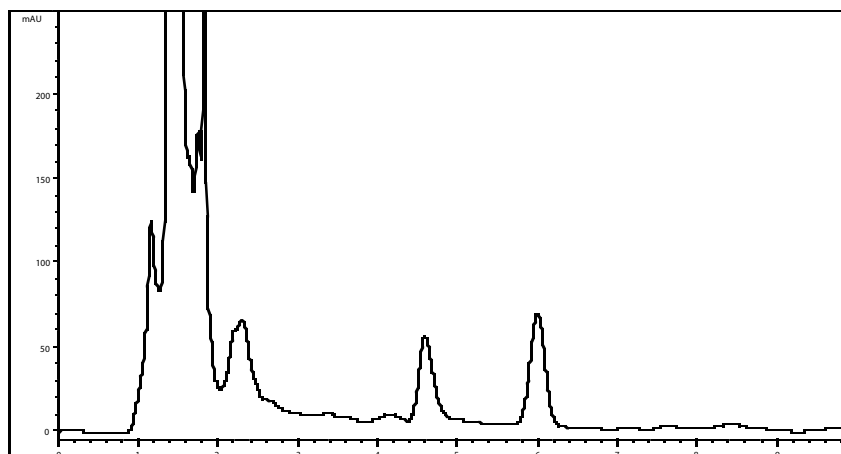
Accurately measure 2 mL of the mixture in a 25 mL volumetric flask, dilute with 50 % ethanol to volume and mix well. Centrifuge, use the supernatant as the test solution.

Chromatographic conditions

- Column: ZORBAX SB C18 4.6×150 mm, 5 µm (883975-902)
- Column temperature: 35 °C
- Mobile phase: methanol-water (30:70)
- Detector wavelength: 230 nm
- Flow rate: 1.0 mL/min
- Injection volume: 10 µL

Chromatographic system

- Agilent 1200 Series quaternary pump with vacuum degasser
- Agilent 1200 Series high-performance autosampler
- Agilent 1200 Series thermostated column compartment
- Agilent 1200 Series variable wavelength detector
- System control through Agilent ChemStation revision B.01.01



Components	k'	Ret Time (min)	Height (mAU)	Area (mAU's)	n	USP T _r
Paeoniflorin		6.005	66.88	888.4	4695	0.97