

Naolejing Syrup (*Naolejing*) – 脑乐静

Sample source

Commercially available Naolejing Syrup

Chemical reference substances

Ammonium glycyrrhizinate (National Institute for the Control of Pharmaceutical and Biological Products, Batch number 0731-9704)

Preparation of test solution

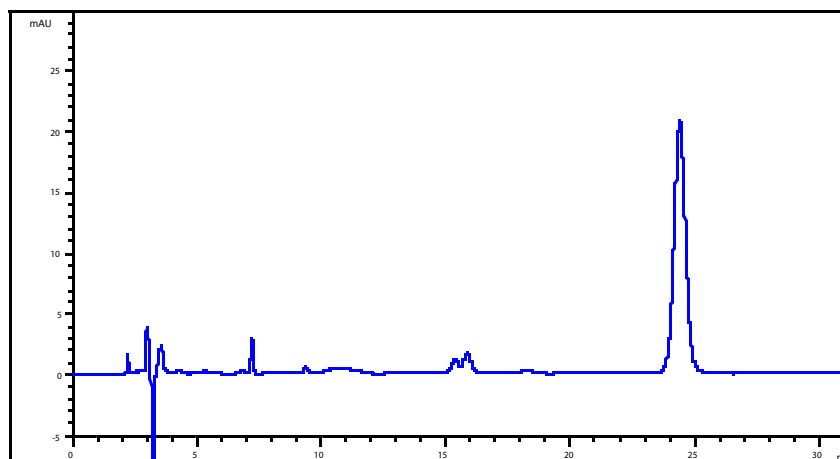
Accurately measure 10 ml of the syrup in a 50 mL volumetric flask, dilute to volume with dilute ethanol TS, shake well, and filter. Discard the initial filtrate, accurately measure 1 mL of the filtrate, in a 10 mL volumetric flask, dilute to volume with dilute ethanol TS, shake well and filter, use the filtrate as the test solution.

Chromatographic conditions

- Column: Agilent TC-C18 4.6×250, 5 μ m (518925-902)
- Column temperature: 20 °C
- Mobile phase: methanol-2.5% glacial acetic acid (35:65)
- Detector wavelength: 254 nm
- Flow rate: 1.0 mL/min
- Injection volume: 5 μ L

Chromatographic system

- Agilent 1200 Series quaternary pump with vacuum degasser
- Agilent 1200 Series high-performance autosampler
- Agilent 1200 Series thermostated column compartment
- Agilent 1200 Series variable wavelength detector
- System control through Agilent ChemStation revision B.01.01



Components	k'	Ret Time (min)	Area (mAU*s)	n	USP T _r
Glycyrrhizinic acid	8.76	24.41	662.0	14299	1.03