

Shrub Chasetree Fruit (*Fructus Viticis*) – 蔓荆子

Sample source

Commercially available Shrub Chastetree Fruit

Chemical reference substances

Vitexicarpin (National Institute for the Control of Pharmaceutical and Biological Products, Batch number 1554-200101)

Preparation of test solution

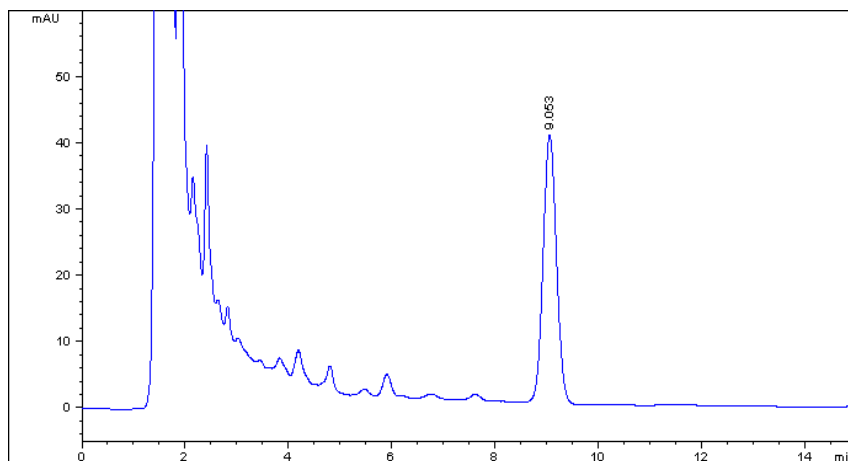
Accurately weigh 2 g of the powder in a stoppered conical flask. Accurately add 50 mL of methanol, weigh, and heat under reflux for 1 hour, allow to cool, weigh again, replenish the lost weight with methanol, mix well and filter. Use the filtrate as the test solution.

Chromatographic conditions

- Column: ZORBAX SB C18 4.6×150 mm, 5 µm (883975-902)
- Column temperature: 25 °C
- Mobile phase: methanol-0.4% phosphoric acid (60:40)
- Detector wavelength: 258nm
- Flow rate: 1.0 mL/min
- Injection volume: 5 µL

Chromatographic system

- Agilent 1200 Series quaternary pump with vacuum degasser
- Agilent 1200 Series high-performance autosampler
- Agilent 1200 Series thermostated column compartment
- Agilent 1200 Series variable wavelength detector
- System control through Agilent ChemStation revision B.01.01



Components	k'	Ret Time (min)	Height (mAU)	Area (mAU*s)	n	USP T _r
Vitexicarpin	5.035	9.053	40.44	723.1	5933	1.04