

# Pubescent Angelica Root (*Radix Angelicae Pubescentis*) – 独活

## Sample source

Commercially available Double-teeth Pubescent Angelica Root (Sichuan province)

## Chemical reference substances

Osthole (National Institute for the Control of Pharmaceutical and Biological Products, Batch number 110822-200305)

## Preparation of test solution

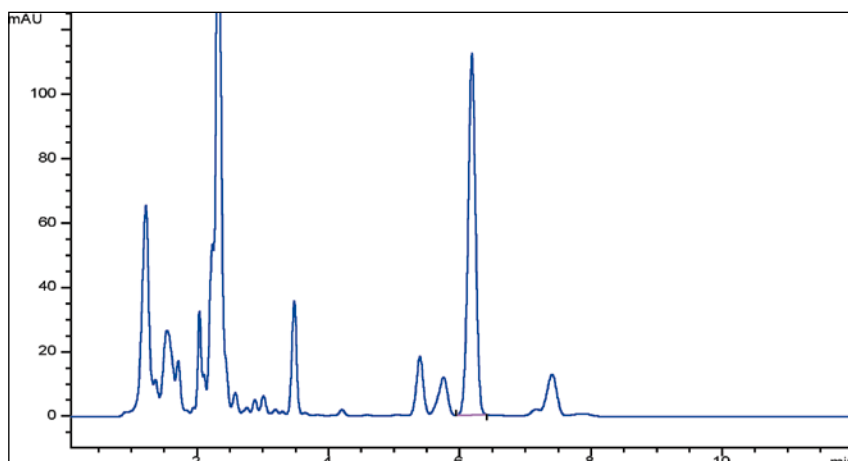
Accurately weigh 0.06 g of the powder in a 10 mL volumetric flask, accurately add 10 mL of methanol, and weigh. Treat ultrasonically for 30 minutes, allow to cool and weigh again, replenish the lost solvent with methanol and mix well. Filter through millipore membrane (0.45  $\mu\text{m}$ ), use the filtrate as test solution.

## Chromatographic conditions

- Column: ZORBAX SB C18 4.6 $\times$ 150 mm, 5  $\mu\text{m}$  (883975-902)
- Column temperature: 35  $^{\circ}\text{C}$
- Mobile phase: acetonitrile-water (60:40)
- Detector wavelength: 322 nm
- Flow rate: 1.0 mL/min
- Injection volume: 10  $\mu\text{L}$

## Chromatographic system

- Agilent 1200 Series quaternary pump with vacuum degasser
- Agilent 1200 Series high-performance autosampler
- Agilent 1200 Series thermostated column compartment
- Agilent 1200 Series variable wavelength detector
- System control through Agilent ChemStation revision B.01.01



Components	k'	Ret Time (min)	Height (mAU)	Area (mAU*s)	n	USP T <sub>r</sub>
Osthole	4.156	6.187	112.38	908.7	13845	0.97