

# Xiao'er Qingre Zhike Mixture (*Xiao'er Qingre Zhike Koufuye*)

## 小儿清热止咳口服液

### Sample source

Commercially available Xiao'er Qingre Zhike Mixture

### Chemical reference substances

Ephedrine hydrochloride (National Institute for the Control of Pharmaceutical and Biological Products)

### Preparation of test solution

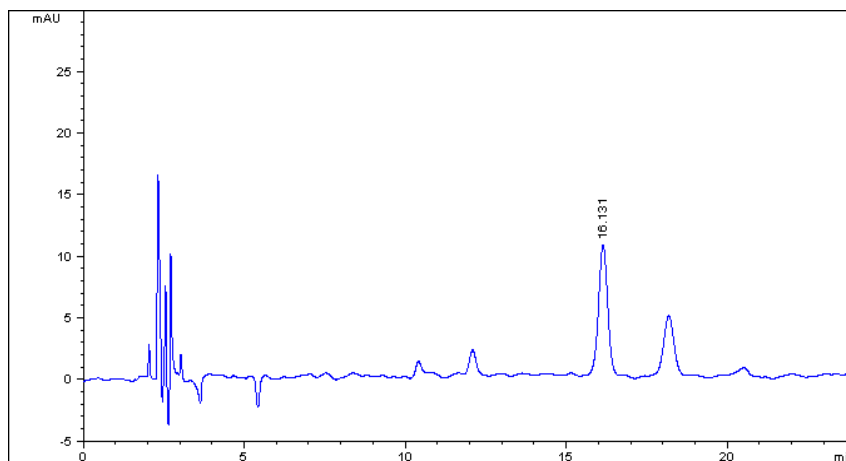
Accurately measure 5 mL, add 10 mL of water and 0.5 mL of concentrated ammonia TS, extract with 30, 30, 20, 20 and 20 mL quantities of ether, combine the ether extracts, add 2 mL of a mixture of hydrochloric acid and ethanol (1:20), mix well, evaporate the solvents to dryness at low temperature, dissolve the residue in 5 mL of ethanol in a 25 mL volumetric flask, dilute with 0.1 mol/L solution of hydrochloric acid to volume, and mix well.

### Chromatographic conditions

- Column: Reprosil Pur C18 4.0×250 mm, 5 μm
- Column temperature: 25 °C
- Mobile phase: acetonitrile-0.1 % phosphoric acid (containing 0.1 % triethylamine) (4:96)
- Detector wavelength: 275 nm
- Flow rate: 1.0 mL/min
- Injection volume: 5 μL

### Chromatographic system

- Agilent 1200 Series quaternary pump with vacuum degasser
- Agilent 1200 Series high-performance autosampler
- Agilent 1200 Series thermostated column compartment
- Agilent 1200 Series variable wavelength detector
- System control through Agilent ChemStation revision B.01.01



Components	k'	Ret Time (min)	Height (mAU)	Area (mAU*s)	n	USP T <sub>r</sub>
Ephedrine	7.065	16.131	10.56	208.2	15666	0.98