

Malaytea Scurfpea Fruit (*Fructus Psoraleae*) – 补骨脂

Sample source

Commercially available Malaytea Scurfpea Fruit

Chemical reference substances

1. Psoralen, 2. Isopsoralen (National Institute for the Control of Pharmaceutical and Biological Products, Batch number 1. 110739-200309 2. 110738-200309)

Preparation of test solution

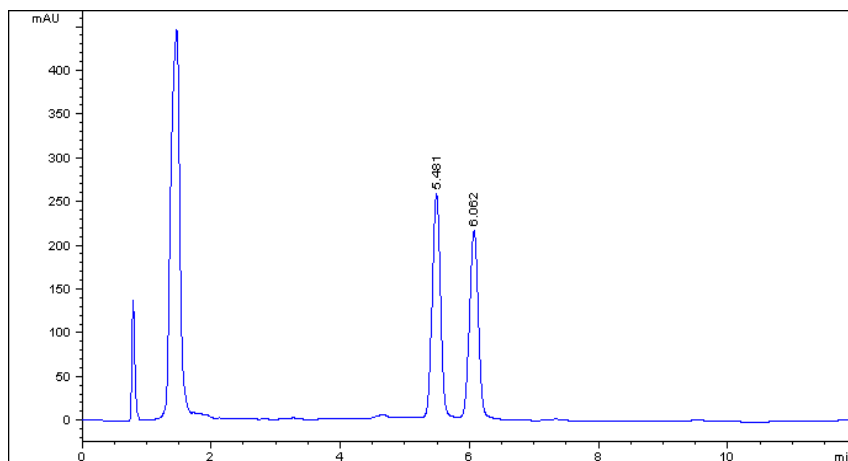
Accurately weigh 0.05 g of the fine powder in a Soxhlet extractor (No. 3 sieve), add a quantity of methanol and heat under reflux for 2 hours, allow cool and transfer to a 10 mL volumetric flask, dilute with methanol to volume and mix well. Filter and use the filtrate as the test solution.

Chromatographic conditions

- Column: ZORBAX SB C18 4.6×150 mm, 5 µm (883975-902)
- Column temperature: 35 °C
- Mobile phase: methanol-water (55:45)
- Detector wavelength: 246 nm
- Flow rate: 1.0 mL/min
- Injection volume: 10 µL

Chromatographic system

- Agilent 1200 Series quaternary pump with vacuum degasser
- Agilent 1200 Series high-performance autosampler
- Agilent 1200 Series thermostated column compartment
- Agilent 1200 Series variable wavelength detector
- System control through Agilent ChemStation revision B.01.01



Components	k'	Ret Time (min)	Height (mAU)	Area (mAU*s)	n	USP T _r
Psoralen	3.567	5.481	255.52	2265.1	8800	1.01
Isopsoralen	4.052	6.062	213.82	2034.9	9393	1.02