

# Liquorice Extract (*Extractum Glycyrrhizae*) – 甘草浸膏

## Sample source

Commercially available prepared slices of Radix Glycyrrhizae

## Chemical reference substances

Ammonium glycyrrhizinate (National Institute for the Control of Pharmaceutical and Biological Products, Batch number 0731-9704)

## Preparation of test solution

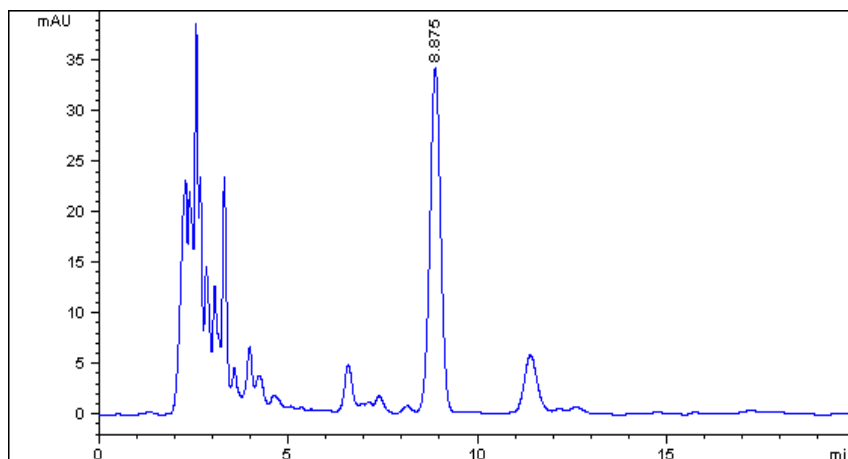
Add 4500 ml of water to 0.45 Kg prepared slices, decoct 3 times, 2 hours for each time. Combine the decoctions, stand overnight to deposit any precipitate and concentrate the supernatant to a thick extract. Accurately weigh 0.25 g in a 50 mL volumetric flask, add 45 mL of the mobile phase, treat ultrasonically for 30 minutes, allow to cool, add the mobile phase to volume, shake well and filter. Accurately measure 10 mL of the filtrate in a 25 mL volumetric flask, add the mobile phase to volume and shake well.

## Chromatographic conditions

- Column: ZORBAX SB C18 4.6×250 mm, 5 µm (880975-902)
- Column temperature: 25 °C
- Mobile phase: methanol-0.2mol/L ammonium acetate-glacial acetic acid (67:33:1)
- Detector wavelength: 250 nm
- Flow rate: 1.0 mL/min

## Chromatographic system

- Agilent 1200 Series quaternary pump with vacuum degasser
- Agilent 1200 Series high-performance autosampler
- Agilent 1200 Series thermostated column compartment
- Agilent 1200 Series variable wavelength detector
- System control through Agilent ChemStation revision B.01.01



| Components          | k'    | Ret Time (min) | Height (mAU) | Area (mAU*s) | n    | USP T <sub>r</sub> |
|---------------------|-------|----------------|--------------|--------------|------|--------------------|
| Glycyrrhizinic acid | 2.550 | 8.875          | 34.05        | 664.8        | 4898 | 0.98               |