

# Curcuma Oils (*Oleum Curcumae*) – 莪朮油

## Sample source

Commercially available Curcuma Oils

## Chemical reference substances

Germacrone (National Institute for the Control of Pharmaceutical and Biological Products, Batch number 111665-200401)

## Preparation of test solution

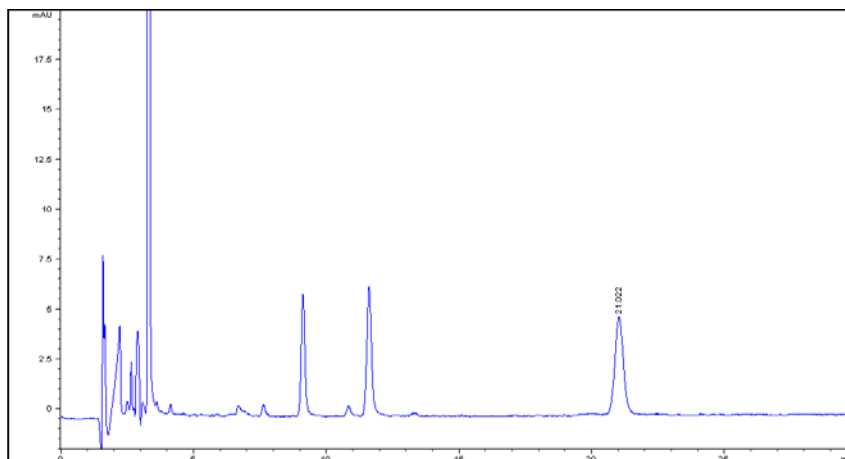
Accurately weigh 0.1 g of the oil in a 50 ml volumetric flask, add ethanol to volume and shake well. Accurately measure 2 ml into a 25 ml volumetric flask, add the mobile phase to volume, shake well, filter, and use the filtrate as the test solution.

## Chromatographic conditions

- Column: ZORBAX XDB CN 4.6×250,5µm (990967-905)
- Column temperature: 50 °C
- Mobile phase: acetonitrile-water (30:70)
- Detector wavelength: 210 nm
- Flow rate: 1.0 mL/min
- Injection volume: 5 µL

## Chromatographic system

- Agilent 1200 Series quaternary pump with vacuum degasser
- Agilent 1200 Series high-performance autosampler
- Agilent 1200 Series thermostated column compartment
- Agilent 1200 Series diode-array detector
- System control through Agilent ChemStation revision B.01.01



Components	k'	Ret Time (min)	Height (mAU)	Area (mAU*s)	n	USP T <sub>r</sub>
Germacrone	7.409	21.022	4.88	109.5	21178	1.06