

Jingfukang Granules (*Jingfukang Keli*) – 颈复康颗粒

Sample source

Commercially available Jingfukang Granules

Chemical reference substances

Puerarin (National Institute for the Control of Pharmaceutical and Biological Products, Batch number 110752-200209)

Preparation of test solution

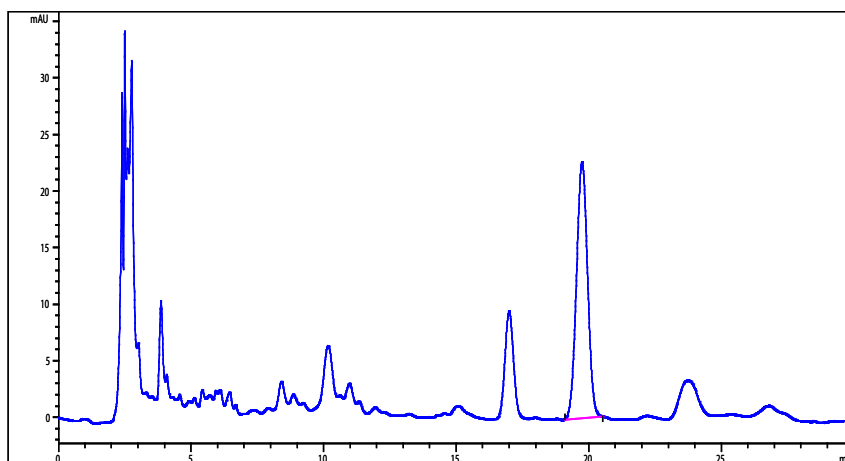
Grind a quantity of the granules to a fine powder and mix well. Accurately weigh 0.5 g of the powder in a stoppered conical flask, accurately add 25 mL of methanol, stopper tightly and weigh. Treat ultrasonically for 30 minutes, allow to cool, weight again, replenish the lost weight with methanol, shake well. Filter the supernatant through a millipore membrane (0.45 μm), use the filtrate as the test solution.

Chromatographic conditions

- Column: ZORBAX SB C18 4.6 \times 250 mm, 5 μm (880975-902)
- Column temperature: 25 $^{\circ}\text{C}$
- Mobile phase: methanol-0.36% phosphoric acid (23:77)
- Detector wavelength: 250 nm
- Flow rate: 1.0 mL/min
- Injection volume: 5 μL

Chromatographic system

- Agilent 1200 Series quaternary pump with vacuum degasser
- Agilent 1200 Series high-performance autosampler
- Agilent 1200 Series thermostated column compartment
- Agilent 1200 Series diode-array detector
- System control through Agilent ChemStation revision B.01.01



Components	k'	Ret Time (min)	Height (mAU)	Area (mAU*s)	n	USP T _r
Puerarin	6.899	19.748	22.64	659.4	10669	1.03