

# Reyanning Granules (*Reyanning Keli*) – 热炎宁颗粒

## Sample source

Commercially available Reyanning Granules

## Chemical reference substances

Emodin (National Institute for the Control of Pharmaceutical and Biological Products, Batch number 110756-200210)

## Preparation of test solution

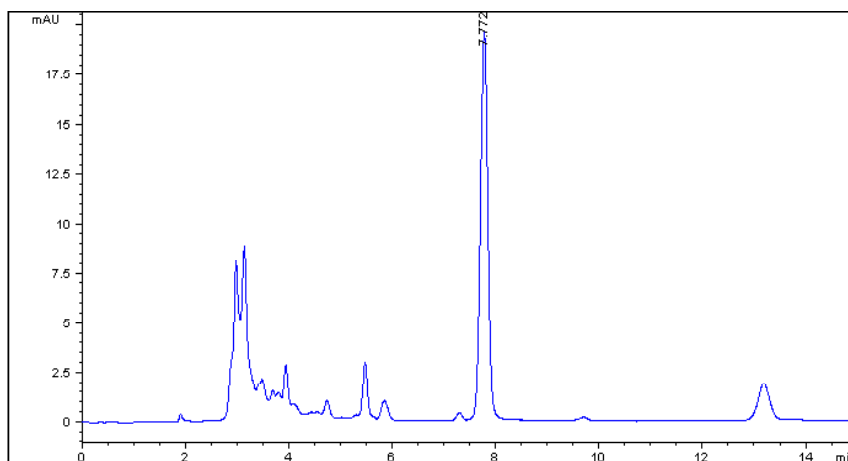
Grind the contents to a fine powder. Accurately weigh 2 g of the powder in a 50 mL stoppered conical flask, accurately add 25 mL of methanol, weigh. Treat ultrasonically for 30 minutes, allow to cool, and weigh again. Replenish the lost weight with methanol, mix well, and filter. Accurately measure 10 mL of the filtrate in a 50 mL round-bottom flask, evaporate the methanol in vacuum, add 10 mL of 2.5 mol/L solution of sulfuric acid, and treat ultrasonically for 5 minutes. Add 10 mL of chloroform, heat under reflux for 1 hour, cool, transfer to a separating funnel, wash the container with a quantity of chloroform, combine the washings in the same separating funnel, separate the chloroform layer, extract the water layer with two 10 mL quantities of chloroform, and combine the chloroform solutions. Dehydrate with a quantity of anhydrous sodium sulfate, wash the container and the filter paper with a quantity of chloroform, combine the washings with the chloroform extracts, and evaporate the chloroform in vacuum. Dissolve the residue in 10 mL of methanol, measured accurately, weigh, slightly heat in a water bath, allow to cool, and weigh again. Replenish the lost weight with methanol, mix well, and filter, use the filtrate as the test solution.

## Chromatographic conditions

- Column: Hypersil ODS 4.6×250 mm, 5 μm (7991618-584)
- Column temperature: 26 °C
- Mobile phase: methanol-0.1% phosphoric acid (85:15)
- Detector wavelength: 254 nm
- Flow rate: 1.0 mL/min
- Injection volume: 5 μL

## Chromatographic system

- Agilent 1200 Series quaternary pump with vacuum degasser
- Agilent 1200 Series high-performance autosampler
- Agilent 1200 Series thermostated column compartment
- Agilent 1200 Series diode-array detector
- System control through Agilent ChemStation revision B.01.01



Components	k'	Ret Time (min)	Height (mAU)	Area (mAU*s)	n	USP T <sub>r</sub>
Emodin	2.109	7.772	19.48	191.0	15105	1.02