

Snow Lotus Herb (*Herba Saussureae Involucratae*) – 天山雪莲

Sample source

Commercially available Snow Lotus Herb (Xinjiang)

Chemical reference substances

1. Rutin, 2. Chlorogenic acid (National Institute for the Control of Pharmaceutical and Biological Products, Batch number: 1. 100080-200306, 2. 110753-200212)

Preparation of test solution

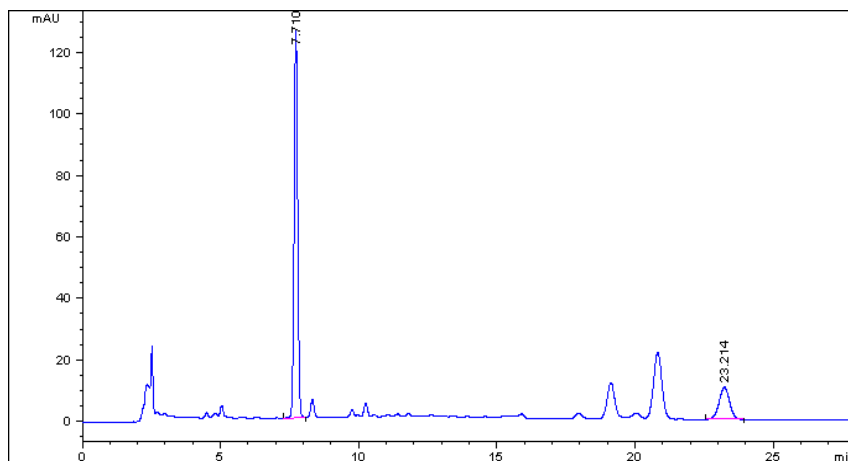
Accurately weigh 0.5 g of the powder in a stoppered conical flask, accurately add 50 mL of 50 % methanol, weigh. Treat ultrasonically for 10 minutes, allow to cool, weigh again, replenish the lost weight with 50 % methanol, mix well, filter, and use the filtrate as the test solution.

Chromatographic conditions

- Column: ZORBAX SB C18 4.6×250 mm, 5 μm (880975-902)
- Column temperature: 25 °C
- Mobile phase: A. 0.4 % phosphoric acid, B. methanol; 0-10 min, 25 %B; 10-30 min, 25-38 %B
- Detector wavelength: 340 nm
- Flow rate: 1.0 mL/min
- Inject volume: 10 μL

Chromatographic system

- Agilent 1200 Series quaternary pump with vacuum degasser
- Agilent 1200 Series high-performance autosampler
- Agilent 1200 Series thermostated column compartment
- Agilent 1200 Series variable wavelength detector
- System control through Agilent ChemStation revision B.01.01



Components	k'	Ret Time (min)	Height (mAU)	Area (mAU's)	n	USP T _r
Chlorogenic acid	2.084	7.710	126.44	1131.1	17833	1.02
rutin	8.285	23.21	10.57	283.9	18398	0.96