

# Blackberrylily Rhizome (*Rhizoma Belamcandae*) – 射干

## Sample source

Commercially available Blackberrylily Rhizome

## Chemical reference substances

Irisfloreantin (National Institute for the Control of Pharmaceutical and Biological Products, Batch number: 1557-200101)

## Preparation of test solution

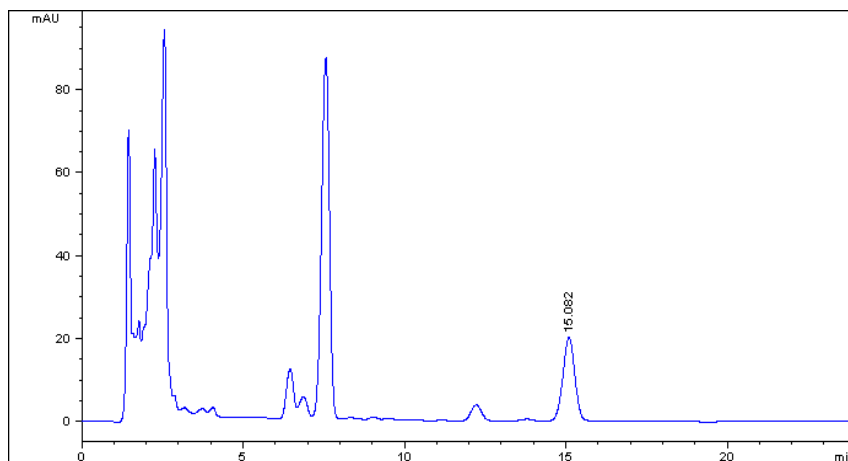
Accurately weigh 0.2 g of the powder in a stoppered conical flask, accurately add 50 mL of methanol and weigh. Heat under reflux for 1 hour, allow to cool and weigh again, replenish the lost weight with methanol, mix well, filter and use the filtrate as the test solution.

## Chromatographic conditions

- Column: ZORBAX SB C18 4.6×150 mm, 5 µm (883975-902)
- Column temperature: 35 °C
- Mobile phase: methanol-0.2%phosphoric acid (52:48)
- Detector wavelength: 266 nm
- Flow rate: 1.0 mL/min
- Injection volume: 10 µL

## Chromatographic system

- Agilent 1200 Series quaternary pump with vacuum degasser
- Agilent 1200 Series high-performance autosampler
- Agilent 1200 Series thermostated column compartment
- Agilent 1200 Series variable wavelength detector
- System control through Agilent ChemStation revision B.01.01



Components	k'	Ret Time (min)	Height (mAU)	Area (mAU*s)	n	USP T <sub>r</sub>
Irisfloreantin	9.054	15.082	20.06	514.3	7956	0.98