

Liquorice Root (*Radix et Rhizoma Glycyrrhizae*) – 甘草¹

Sample source

Commercially available Liquorice Root

Chemical reference substances

Glycyramarin (National Institute for the Control of Pharmaceutical and Biological Products, Batch number 111610-200401)

Preparation of test solution

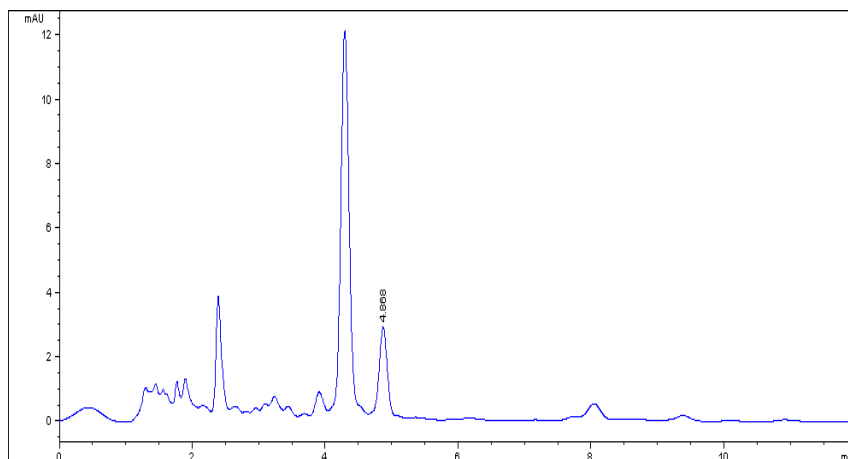
Accurately weigh 0.2 g of the powder in a stoppered conical flask, accurately add 10 mL of 70% ethanol and weigh. Treat ultrasonically for 30 minutes, take out and weigh again, replenish the lost weight with 70 % ethanol and filter. Accurately measure 5 mL of the filtrate in a 100 mL volumetric flask, dilute to volume with 20 % acetonitrile and mix well.

Chromatographic conditions

- Column: ZORBAX XDB C18 4.6×150 mm, 5 µm (993967-902)
- Column temperature: 25 °C
- Mobile phase: acetonitrile-0.5 % glacial acetic acid (1:4)
- Detector wavelength: 276 nm
- Flow rate: 1.0 mL/min

Chromatographic system

- Agilent 1200 Series quaternary pump with vacuum degasser
- Agilent 1200 Series high-performance autosampler
- Agilent 1200 Series thermostated column compartment
- Agilent 1200 Series variable wavelength detector
- System control through Agilent ChemStation revision B.01.01



Components	k'	Ret Time (min)	Height (mAU)	Area (mAU*s)	n	USP T _f
Glycyramarin	2.245	4.868	2.73	22.4	8246	0.95