

# Common Scouring Rush Herb (*Herba Equiseti Hiemalis*) – 木 賊

## Sample source

Commercially available Common Scouring Rush Herb

## Chemical reference substances

Kaempferol (National Institute for the Control of Pharmaceutical and Biological Products, Batch number 0864-9901)

## Preparation of test solution

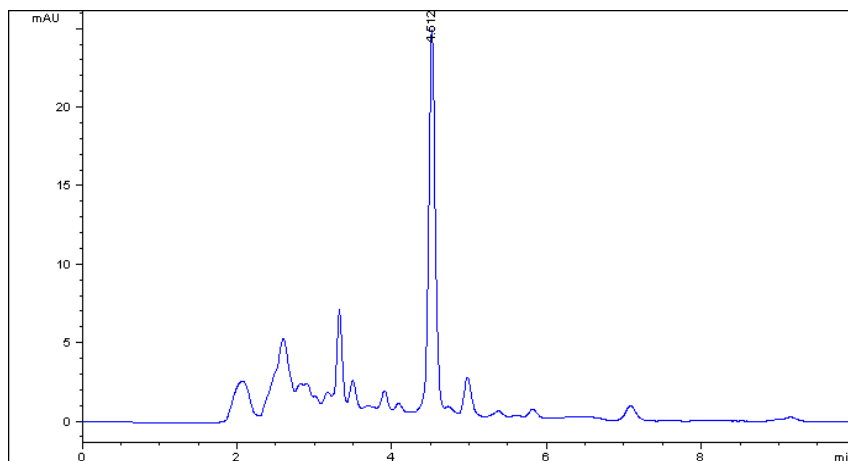
Accurately weigh 0.75 g of the powder in a stoppered conical flask, accurately add 50 mL of 75 % methanol, weigh, heat on a water bath for 1 hour, allow to cool, weigh again, replenish the lost weight with 75 % methanol, mix well and filter. Accurately measure 20 mL of the filtrate, accurately add 5 mL of hydrochloric acid, heat on a water bath for 1 hour, and allow to cool. Transfer to a 50 mL volumetric flask, dilute with 75 % methanol to volume and mix well, use the filtrate as the test solution.

## Chromatographic conditions

- Column: ZORBAX SB C18 4.6×250 mm, 5 µm (880975-902)
- Column temperature: 30 °C
- Mobile phase: acetonitrile-0.4% phosphoric acid (52:48)
- Detector wavelength: 365 nm
- Flow rate: 1.0 mL/min
- Injection volume: 5 µL

## Chromatographic system

- Agilent 1200 Series quaternary pump with vacuum degasser
- Agilent 1200 Series high-performance autosampler
- Agilent 1200 Series thermostated column compartment
- Agilent 1200 Series variable wavelength detector
- System control through Agilent ChemStation revision B.01.01



Components	k'	Ret Time (min)	Height (mAU)	Area (mAU*s)	n	USP T <sub>r</sub>
Kaempferol	0.805	4.512	24.18	140.1	15456	1.05