

Ginkgo Biloba Leaf Extract (*Extractum Folium Ginkgo Siccus*)

银杏叶提取物

Sample source

Commercially available Ginkgo Leaf (Pizhou, Jiangsu province)

Chemical reference substances

Ginkgolide A, Ginkgolide B, Ginkgolide C, and Bilobalide (National Institute for the Control of Pharmaceutical and Biological Products, Batch number: 0862-200004, 110863-200305, 110864-200304, 110865-200404)

Preparation of test solution

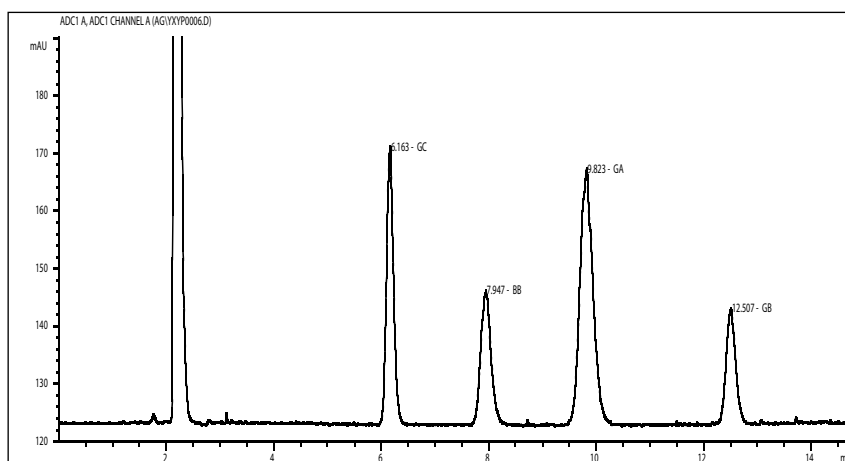
Accurately weigh 10 g sample, extract with 10 mL of water on a water bath, add 2 drops of a 2 % hydrochloride acid solution, extract by shaking with one 15 mL and three 10 mL quantities of ethyl acetate, combine the ethyl acetate extracts and wash with 5 % sodium acetate solution. Separate the sodium acetate layer, wash again with 10 mL of ethyl acetate. Combine the ethyl acetate extracts and ethyl acetate washings, wash with two 20 mL quantities of water, separate the water layer and wash with 10 mL ethyl acetate. Combine all the ethyl acetate solutions and evaporate the solvent to dryness. Dissolve the residue in methanol, transfer to a 5 mL volumetric flask, add methanol to volume, shake well, filter and use the filtrate as the test solution.

Chromatographic conditions

- Column: ZORBAX SB C18 4.6×250 mm, 5 µm (990967-902)
- Column temperature: 50 °C
- Mobile phase: A: 1 % n-propanol in water, B: 1 % n-propanol in tetrahydrofuran; 0-6 min: 30-15 %B, 6-10 min: 15-30 %B, 10-15 min: 30 %B.
- Evaporator tube temperature: 80 °C
- Nebulizing temperature: 50 °C
- Air flow rate: 1.2SLM
- Flow rate: 1.0 mL/min
- Inject volume: 10 µL

Chromatographic system

- Agilent 1200 Series quaternary pump with vacuum degasser
- Agilent 1200 Series high-performance autosampler
- Agilent 1200 Series thermostated column compartment
- Agilent 1200 Series variable wavelength detector
- System control through Agilent ChemStation revision B.01.01



Components	k'	Ret Time (min)	Height (mAU)	Area (mAU's)	n	USP T _r
bilobalide	2.179	7.947	22.95	295.6	8895	1.10
ginkgolide A	2.929	9.823	44.27	736.8	8010	1.10
ginkgolide B	4.003	12.507	19.89	241.4	24871	1.08
ginkgolide C	1.465	6.163	47.70	426.0	10735	1.10