

Paniculate Swallowwort Root

(*Radix et Rhizoma Cynanchi Paniculati*) – 徐长卿

Sample source

Commercially available Paniculate Swallowwort Root (Jiangsu province)

Chemical reference substances

Paeonol (National Institute for the Control of Pharmaceutical and Biological Products, Batch number: 110822-200205)

Preparation of test solution

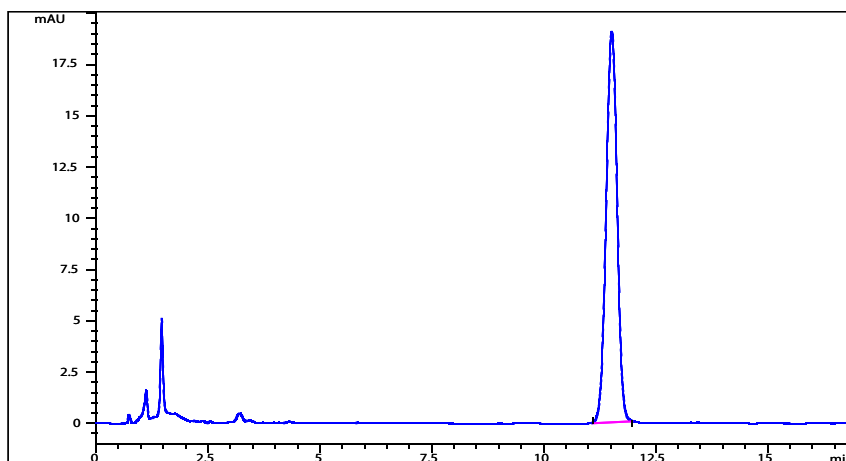
Accurately weigh 0.5 g of the powder in a 100 mL stoppered conical flask, accurately add 50 mL of methanol and weigh. Treat ultrasonically for 30 minutes, allow to cool and weigh again, replenish the lost solvent with methanol, mix well and filter. Accurately measure 1 mL of the filtrate in a 10 mL volumetric flask, dilute with methanol to volume and mix well.

Chromatographic conditions

- Column: ZORBAX SB C18 4.6×150 mm, 5 μm (883975-902)
- Column temperature: 35 °C
- Mobile phase: methanol-water (45:55)
- Detector wavelength: 274 nm
- Flow rate: 1.0 mL/min
- Injection volume: 5 μL

Chromatographic system

- Agilent 1200 Series quaternary pump with vacuum degasser
- Agilent 1200 Series high-performance autosampler
- Agilent 1200 Series thermostated column compartment
- Agilent 1200 Series variable wavelength detector
- System control through Agilent ChemStation revision B.01.01



Components	k'	Ret Time (min)	Height (mAU)	Area (mAU*s)	n	USP T _r
Paeonol	8.601	11.522	19.06	324.4	10512	0.99