

Wild Chrysanthemum Flower (*Flos Chrysanthemi Indici*) – 野菊花

Sample source

Commercially available Wild Chrysanthemum Flower

Chemical reference substances

Buddleoside (National Institute for the Control of Pharmaceutical and Biological Products)

Preparation of test solution

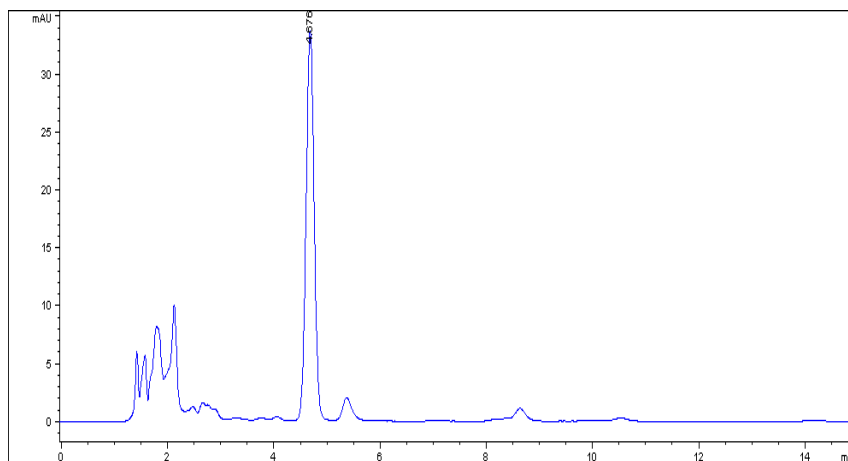
Accurately weigh 0.25 g of the powder in a stoppered conical flask, accurately add 100 mL of methanol, heat under reflux for 3 hours, allow to cool and weigh again, replenish the lost solvent with methanol and mix well. Filter with a millipore membrane (0.45 μm) and use the filtrate as the test solution.

Chromatographic conditions

- Column: ZORBAX SB C18 4.6 \times 150 mm, 5 μm (883975-902)
- Column temperature: 25 $^{\circ}\text{C}$
- Mobile phase: methanol-water-glacial acetic acid (52:46:2)
- Detector wavelength: 334 nm
- Flow rate: 1.0 mL/min
- Inject volume: 5 μL

Chromatographic system

- Agilent 1200 Series quaternary pump with vacuum degasser
- Agilent 1200 Series high-performance autosampler
- Agilent 1200 Series thermostated column compartment
- Agilent 1200 Series diode-array detector
- System control through Agilent ChemStation revision B.01.01



Components	k'	Ret Time (min)	Height (mAU)	Area (mAU*s)	n	USP T _r
buddleoside	2.897	4.676	33.66	353.4	4635	1.02