

Sanbao Capsules (*Sanbao Jiaonang*) – 三宝胶囊

Sample source

Commercially available Sanbao Capsules

Chemical reference substances

Protocatechuic aldehyde (National Institute for the Control of Pharmaceutical and Biological Products, Batch number 110810-200205)

Preparation of test solution

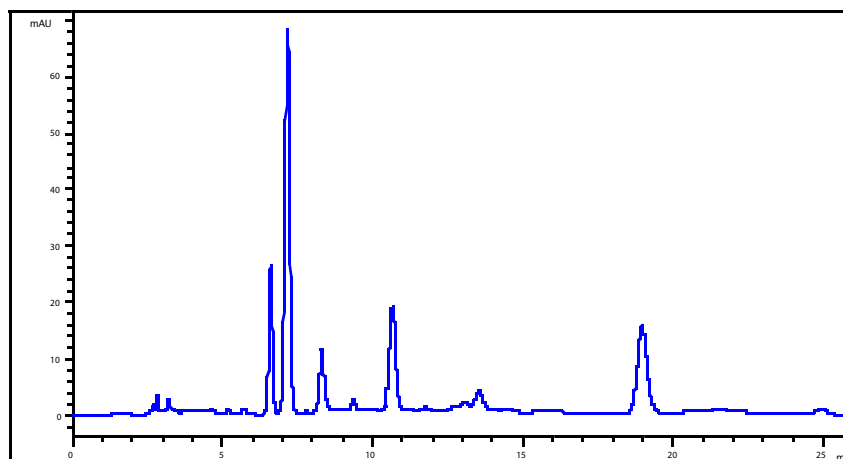
Accurately weigh the contents of 20 capsules, mix well, accurately weigh 0.8 g in a stoppered conical flask, accurately add 20 mL of methanol, weigh. Heat under reflux for 1 hour, allow to cool, weigh again, replenish the lost weight with methanol, shake well and filter. Accurately measure 10 mL of the filtrate and evaporate to dryness. Dissolve the residue in 10 mL of water and adjust pH to 2 with dilute hydrochloric acid TS, extract with four 10 ml quantities of ether, combine the ether extracts, evaporate the ether and dissolve the residue in methanol, transfer to a 10 mL volumetric flask, add methanol to volume, shake well, filter through a millipore membrane (0.45 μm) and use the filtrate as the test solution.

Chromatographic conditions

- Column: Agilent TC-C18, 4.6 \times 250 mm, 5 μm (518925-902)
- Column temperature: 25 $^{\circ}\text{C}$
- Mobile phase: 0.1% acetic acid-methanol (87:13)
- Detector wavelength: 279 nm
- Flow rate: 1.0 mL/min
- Injection volume: 5 μL

Chromatographic system

- Agilent 1200 Series quaternary pump with vacuum degasser
- Agilent 1200 Series high-performance autosampler
- Agilent 1200 Series thermostated column compartment
- Agilent 1200 Series diode-array detector
- System control through Agilent ChemStation revision B.01.01



Components	Ret Time (min)	Height (mAU)	Area (mAU*s)	n	USP T_r
protocatechuic aldehyde	18.964	15.36	349.3	16546	1.08