

Yinhuang Mixture (*Yinhuang Koufuye*) – 银黄口服液

Sample source

Commercially available Yinhuang Mixture

Chemical reference substances

Chlorogenic acid (National Institute for the Control of Pharmaceutical and Biological Products, Batch number: 110753-200212)

Preparation of test solution

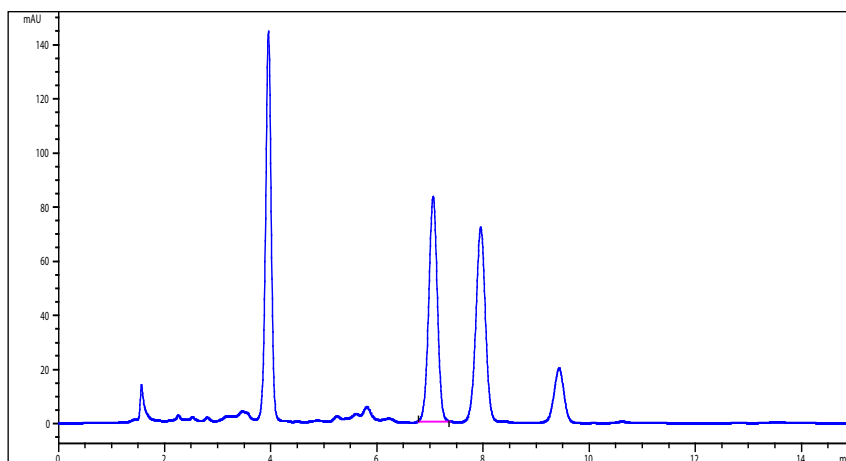
Accurately measure 0.2 mL of the mixture in a 10 mL amber volumetric flask, dilute with 50 % methanol to volume, mix well, filter and use the filtrate as the test solution.

Chromatographic conditions

- Column: ZORBAX SB C18 4.6×150 mm, 5 µm (883975-902)
- Column temperature: 35 °C
- Mobile phase: acetonitrile-0.4 % phosphoric acid (10:90)
- Detector wavelength: 327 nm
- Flow rate: 1.0 mL/min
- Injection volume: 10 µL

Chromatographic system

- Agilent 1200 Series quaternary pump with vacuum degasser
- Agilent 1200 Series high-performance autosampler
- Agilent 1200 Series thermostated column compartment
- Agilent 1200 Series variable wavelength detector
- System control through Agilent ChemStation revision B.01.01



Components	k'	Ret Time (min)	Height (mAU)	Area (mAU*s)	n	USP T _r
Chlorogenic acid		7.060	83.02	932.7	9569	0.98