

# Ginkgo Leaf (*Folium Ginkgo*) – 银杏叶

## Sample source

Commercially available Ginkgo Leaf (Pizhou, Jiangsu province)

## Chemical reference substances

Ginkgolide A, Ginkgolide B, Ginkgolide C, and Bilobalide (National Institute for the Control of Pharmaceutical and Biological Products, Batch number: 0862-200004, 110863-200305, 110864-200304, 110865-200404)

## Preparation of test solution

Accurately weigh 1.5 g of the powder in a Soxhlet extractor, add petroleum ether (30-60 °C) and heat under reflux on a water bath at 70 °C for 1 hour. Discard the petroleum ether solution, evaporate the residue and the extractor to dryness at 60 °C in an oven, add methanol, heat under reflux for 6 hours, evaporate the extract to dryness, dissolve the residue in methanol, transfer accurately to a 10 mL volumetric flask, treat ultrasonically for 30 minutes, allow to cool, add methanol to volume, mix well, and allow to stand.

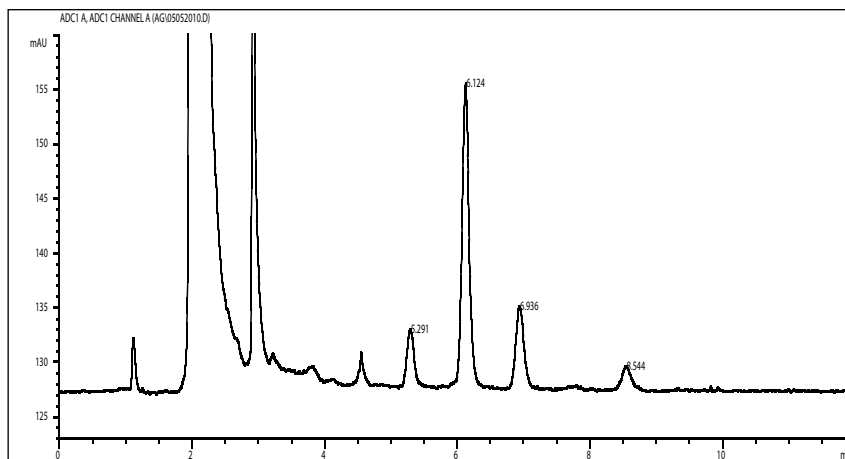
Accurately measure 5 mL of the supernatant and apply to an acidic alumina column, elute with 25 mL of methanol, collect the eluent, evaporate to dryness, dissolve the residue in 5 mL of methanol, transfer to a 10 mL volumetric flask, add 4.5 mL of water, treat ultrasonically for 30 minutes, cool, add methanol to volume, mix well and filter.

## Chromatographic conditions

- Column: ZORBAX Extend C18 4.6×250 mm, 5 µm (770450-902)
- Column temperature: 25 °C
- Mobile phase: methanol-tetrahydrofuran-water (25:10:65)
- Evaporator tube temperature: 80 °C, Nebulizing temperature: 50 °C, Air flow rate: 1.2SLM
- Flow rate: 1.0 ml/min
- Inject volume: 10 µl

## Chromatographic system

- Agilent 1200 Series quaternary pump with vacuum degasser
- Agilent 1200 Series high-performance autosampler
- Agilent 1200 Series thermostated column compartment
- Agilent 35900 A/D converter
- ELSD PL-ELS 1000
- System control through Agilent ChemStation revision B.01.01



Components	k'	Ret Time (min)	Height (mAU)	Area (mAU's)	n	USP T <sub>r</sub>
bilobalide	1.45	6.124	27.20	192.9	17704	1.099
ginkgolide A	1.776	6.939	7.12	57.9	16626	1.103
ginkgolide B	2.418	8.545	2.21	22.7	17585	0.953
ginkgolide C	1.116	5.291	4.92	33.1	13214	1.100