

Jinguo Tablets (*Jinguo Hanpian*) – 金果含片

Sample source

Commercially available Jinguo Tablets

Chemical reference substances

Hesperadin (National Institute for the Control of Pharmaceutical and Biological Products, Batch number 110721-200211)

Preparation of test solution

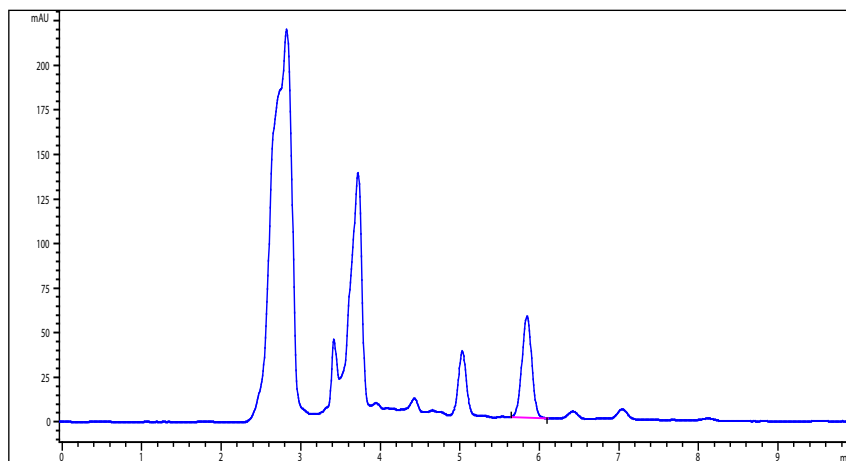
Accurately weigh 20 tablets, grind to a fine powder; accurately weigh 2 g of the powder, put in a Soxhlet extractor, add 80 mL of methanol, heat under reflux until the extract is colorless and allow to cool. Transfer the extract to a 100 mL volumetric flask, wash the vessel with a quantity of methanol several times, add the washings to the same volumetric flask, and dilute with methanol to volume. Mix thoroughly and filter, use the filtrate as the test solution.

Chromatographic conditions

- Column: ZORBAX SB C18 4.6×250 mm, 5 µm (880975-902)
- Column temperature: 25 °C
- Mobile phase: acetonitrile-1.5% glacial acetic acid (26:74)
- Detector wavelength: 284nm
- Flow rate: 0.8 ml/min
- Injection volume: 5 µl

Chromatographic system

- Agilent 1200 Series quaternary pump with vacuum degasser
- Agilent 1200 Series high-performance autosampler
- Agilent 1200 Series thermostated column compartment
- Agilent 1200 Series variable wavelength detector
- System control through Agilent ChemStation revision B.01.01



Components	k'	Ret Time (min)	Height (mAU)	Area (mAU*s)	n	USP T _r
Hesperidin	0.870	5.845	56.97	493.0	10917	0.97