

Thomson Kudzuvine Root (*Radix Puerariae Thomsonii*) – 粉葛

Sample source

Commercially available Thomson Kudzuvine Root

Chemical reference substances

Puerarin (National Institute for the Control of Pharmaceutical and Biological Products, Batch number 110752-200209)

Preparation of test solution

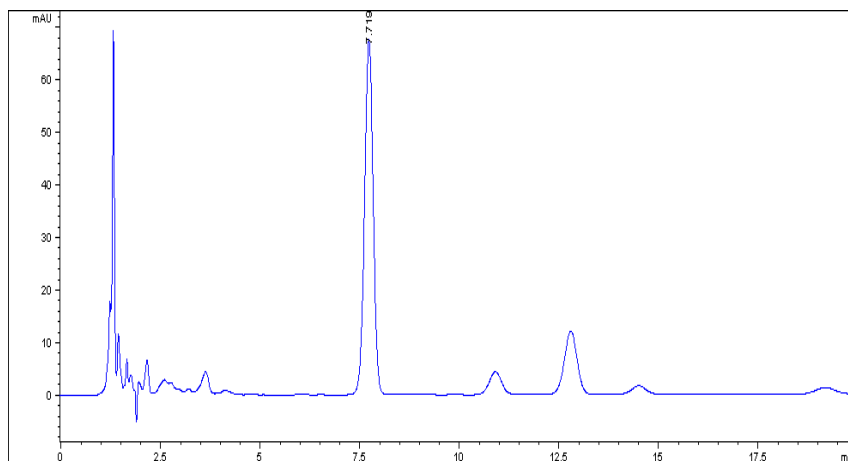
Accurately weigh 0.8 g of the powder in a conical flask, accurately add 50 ml of 30 % ethanol and weigh. Heat under reflux on a water bath for 30 minutes, allow to cool, and weigh again, replenish the lost solvent with 30 % ethanol and mix well. Filter and use the filtrate as the test solution.

Chromatographic conditions

- Column: ZORBAX SB C18 4.6×150 mm, 5 µm (883975-902)
- Column temperature: 25 °C
- Mobile phase: methanol-water (25:75)
- Detector wavelength: 250 nm
- Flow rate: 1.0 mL/min
- Injection volume: 5 µL

Chromatographic system

- Agilent 1200 Series quaternary pump with vacuum degasser
- Agilent 1200 Series high-performance autosampler
- Agilent 1200 Series thermostated column compartment
- Agilent 1200 Series diode-array detector
- System control through Agilent ChemStation revision B.01.01



Components	k'	Ret Time (min)	Height (mAU)	Area (mAU*s)	n	USP T _r
Puerarin	4.416	7.719	67.57	1016.5	6180	1.01