

Asiatic Cornelian Cherry Fruit (*Fructus Corni*) – 山茱萸

Sample source

Commercially available Asiatic Cornelian Cherry Fruit

Chemical reference substances

Loganin (National Institute for the Control of Pharmaceutical and Biological Products, Batch number 111640-200401)

Preparation of test solution

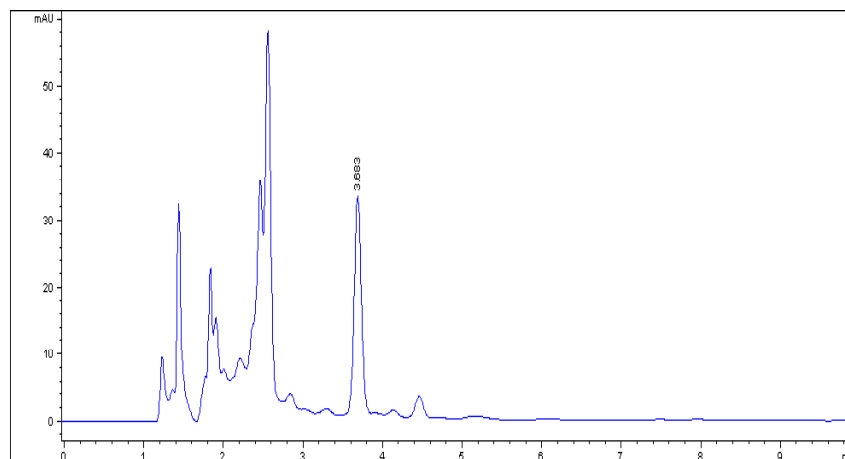
Accurately weigh 0.1 g of the powder in a stoppered conical flask, accurately add 25 mL of 80 % methanol and weigh, heat under reflux for 1 hour, cool and weigh accurately again, replenish the lost solvent with 80 % methanol, mix well and filter, and use the filtrate as the test solution.

Chromatographic conditions

- Column: ZORBAX XDB C18 4.6×150 mm, 5 µm (993967-902)
- Column temperature: 25 °C
- Mobile phase: acetonitrile-water (15:85)
- Detector wavelength: 240 nm
- Flow rate: 1.0 mL/min
- Injection volume: 5 µL

Chromatographic system

- Agilent 1200 Series quaternary pump with vacuum degasser
- Agilent 1200 Series high-performance autosampler
- Agilent 1200 Series thermostated column compartment
- Agilent 1200 Series diode-array detector
- System control through Agilent ChemStation revision B.01.01



Components	k'	Ret Time (min)	Height (mAU)	Area (mAU*s)	n	USP T _r
Loganin	1.456	3.683	32.64	202.7	8231	1.04