

# Zhike Juhong Mixture (*Zhike Juhong Koufuye*) – 止咳橘红口服液

## Sample source

Commercially available Zhike Juhong Mixture

## Chemical reference substances

Naringin (National Institute for the Control of Pharmaceutical and Biological Products, Batch number: 110722-200309)

## Preparation of test solution

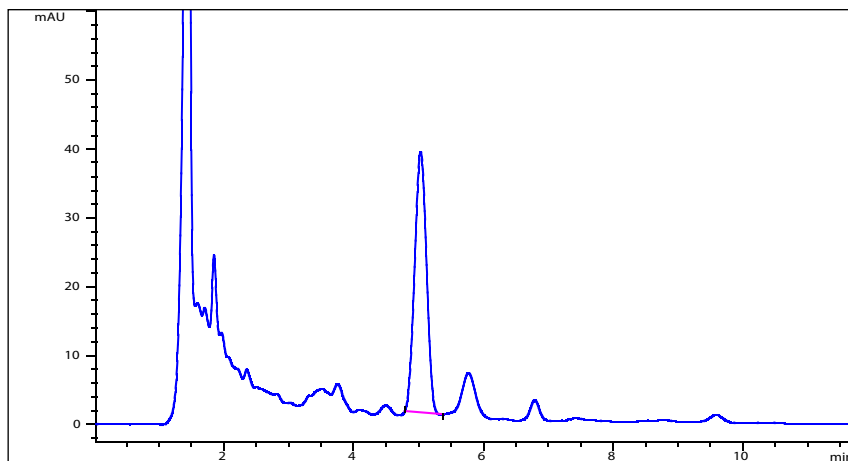
Accurately measure 1 mL of the mixture in a 25 mL volumetric flask, dilute with methanol to volume and mix well. Filter through a millipore membrane (0.45  $\mu\text{m}$ ) and use the filtrate as the test solution.

## Chromatographic conditions

- Column: ZORBAX SB C18 4.6 $\times$ 150 mm, 5  $\mu\text{m}$  (883975-902)
- Column temperature: 40  $^{\circ}\text{C}$
- Mobile phase: methanol-water-acetic acid (38:62:0.5)
- Detector wavelength: 283 nm
- Flow rate: 1.0 mL/min
- Injection volume: 5  $\mu\text{L}$

## Chromatographic system

- Agilent 1200 Series quaternary pump with vacuum degasser
- Agilent 1200 Series high-performance autosampler
- Agilent 1200 Series thermostated column compartment
- Agilent 1200 Series variable wavelength detector
- System control through Agilent ChemStation revision B.01.01



Components	k'	Ret Time (min)	Height (mAU)	Area (mAU*s)	n	USP T <sub>r</sub>
Naringin	3.195	5.034	37.83	478.3	3546	0.98