

Bigflower Rhodiola Root (*Radix et Rhizoma Rhodiolae*) – 红景天

Sample source

Commercially available Bigflower Rhodiola Root

Chemical reference substances

Salidroside (National Institute for the Control of Pharmaceutical and Biological Products, Batch number 110818-200404)

Preparation of test solution

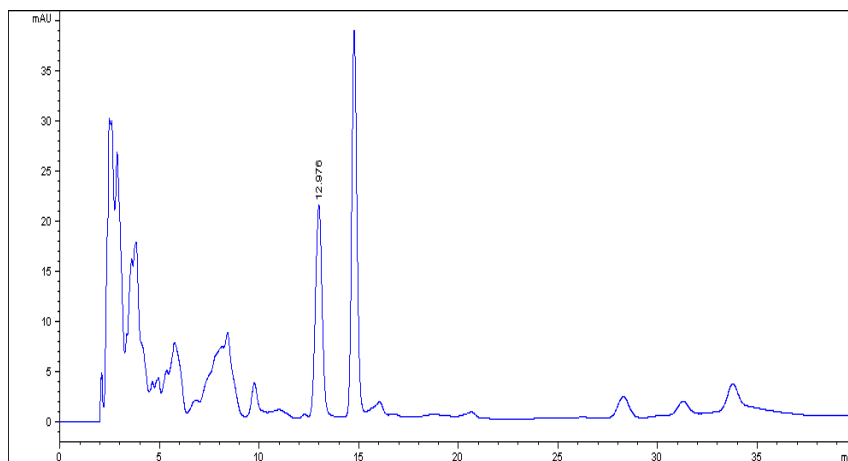
Accurately weigh 0.5 g of the powder in a stoppered conical flask, accurately add 10 mL of methanol, mix well and weigh. Treat ultrasonically for 30 minutes, allow to cool, weigh again, replenish the lost solvent with methanol and mix well. Filter and use the filtrate as the test solution.

Chromatographic conditions

- Column: ZORBAX Extend C18 4.6×250 mm, 5 μm (770450-902)
- Column temperature: 25 °C
- Mobile phase: methanol-water (15:85)
- Detector wavelength: 275 nm
- Flow rate: 1.0 mL/min
- Injection volume: 5 μL

Chromatographic system

- Agilent 1200 Series quaternary pump with vacuum degasser
- Agilent 1200 Series high-performance autosampler
- Agilent 1200 Series thermostated column compartment
- Agilent 1200 Series diode-array detector
- System control through Agilent ChemStation revision B.01.01



Components	k'	Ret Time (min)	Height (mAU)	Area (mAU*s)	n	USP T _r
Salidroside	4.190	12.976	21.04	482.0	7332	1.01