

Orientvine Stem (*Caulis Sinomenii*) – 青风藤

Sample source

Commercially available Orientvine Stem

Chemical reference substances

Sinomenine (National Institute for the Control of Pharmaceutical and Biological Products, Batch number 110774-200206)

Preparation of test solution

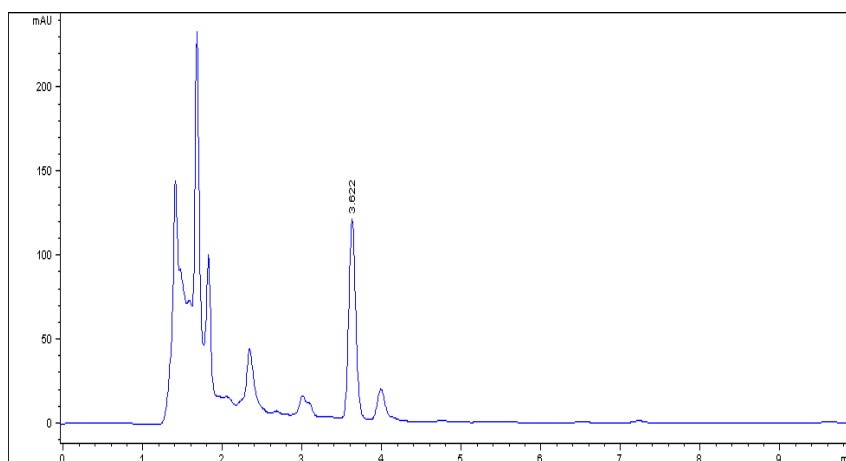
Accurately weigh 0.5 g of the powder in a stoppered conical flask, accurately add 20 mL of 70 % ethanol, stopper tightly, weigh, treat ultrasonically for 20 minutes, allow to cool, weigh again and replenish the lost weight with 70 % ethanol, shake thoroughly, filter, use the filtrate as the test solution.

Chromatographic conditions

- Column: ZORBAX XDB C8 4.6×250 mm, 5 µm (990967-902)
- Column temperature: 35 °C
- Mobile phase: methanol-phosphate BS (to 0.01 mol/L sodium hydrogen phosphate solution, monitor the pH value to 8.0 with 0.01 mol/L sodium dihydrogen phosphate solution, and monitor the pH value to 9.5 with 1 % triethylamine) (58:42)
- Detector wavelength: 262 nm
- Flow rate: 1.0 mL/min
- Injection volume: 5 µL

Chromatographic system

- Agilent 1200 Series quaternary pump with vacuum degasser
- Agilent 1200 Series high-performance autosampler
- Agilent 1200 Series thermostated column compartment
- Agilent 1200 Series diode-array detector
- System control through Agilent ChemStation revision B.01.01



Components	k'	Ret Time (min)	Height (mAU)	Area (mAU*s)	n	USP T _r
Sinomenine	1.173	3.622	118.58	707.6	8756	1.07