

Shengxue Pills (*Shengxue Wan*) – 生血丸

Sample source

Commercially available Shengxue Pills

Chemical reference substances

Berberine hydrochloride (National Institute for the Control of Pharmaceutical and Biological Products, Batch number: 110713-200208)

Preparation of test solution

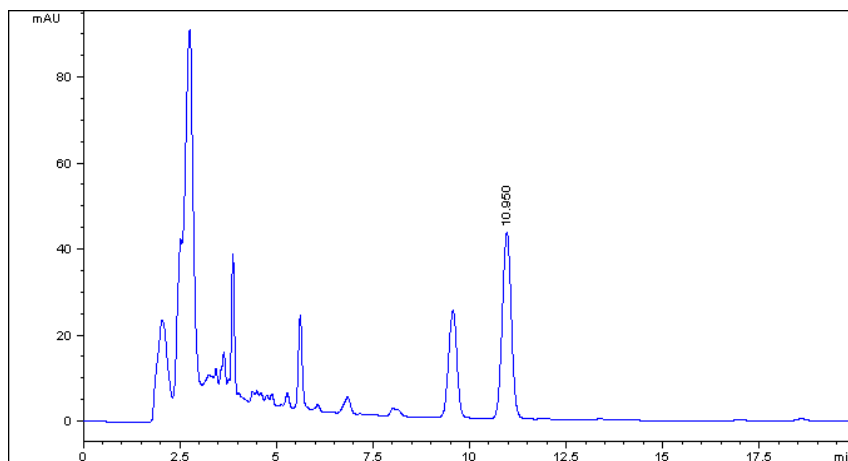
Grind the pills to a fine powder, accurately weigh 3 g of the powder in a Soxhlet extractor, add 40 mL of a mixture of methanol and hydrochloric acid (100:1), allow to soak overnight, add a quantity of methano, and heat under reflux until the extract is colorless. Allow to cool, concentrate the methanol extracts and transfer to a 50 mL volumetric flask, add methanol to volume, mix well and filter. Use the filtrate as the test solution.

Chromatographic conditions

- Column: ZORBAX XDB C18 4.6×250 mm, 5 µm (990967-902)
- Column temperature: 25 °C
- Mobile phase: acetonitrile-(5 mmol/L sodium dihydrogen phosphate and 17 % sodium dodecylsulfonate) (50:50)
- Detector wavelength: 345 nm
- Flow rate: 1.0 mL/min
- Inject volume: 10 µL

Chromatographic system

- Agilent 1200 Series quaternary pump with vacuum degasser
- Agilent 1200 Series high-performance autosampler
- Agilent 1200 Series thermostated column compartment
- Agilent 1200 Series variable wavelength detector
- System control through Agilent ChemStation revision B.01.01



Components	k'	Ret Time (min)	Height (mAU)	Area (mAU*s)	n	USP T _r
Berberine	3.380	10.95	43.43	709.0	10231	1.03