

Japanese Honeysuckle Flower (*Flos Lonicerae Japonicae*)

金银花

Sample source

Commercially available Japanese Honeysuckle Flower

Chemical reference substances

Chlorogenic acid (National Institute for the Control of Pharmaceutical and Biological Products, Batch number 110753-200212)

Preparation of test solution

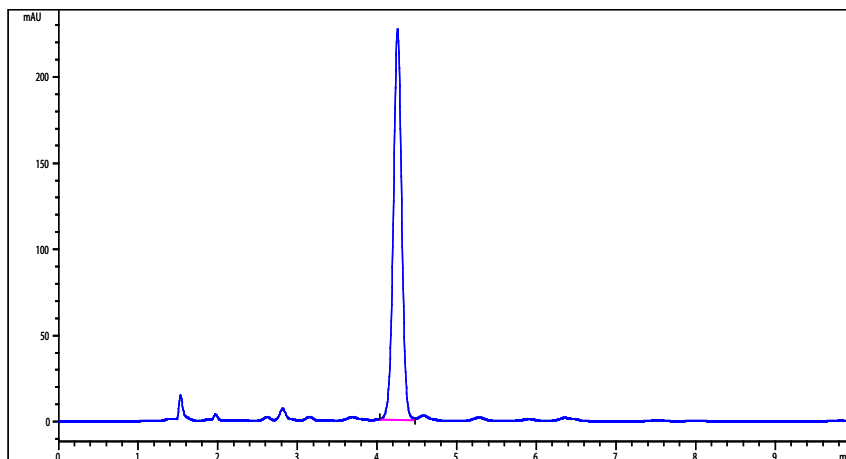
Accurately weigh 0.05 g of the powder in a stoppered conical flask, accurately add 25 mL of 50 % methanol, weigh and treat ultrasonically for 30 minutes, allow to cool, weigh again and replenish the lost weight with 50 % methanol, and mix well. Filter, accurately measure 5 mL of the filtrate in a 25 mL amber volumetric flask, add 50 % methanol to volume and mix well.

Chromatographic conditions

- Column: ZORBAX SB C18 4.6×150 mm, 5 µm (883975-902)
- Column temperature: 35 °C
- Mobile phase: acetonitrile-0.4% phosphoric acid (13:87)
- Detector wavelength: 327nm
- Flow rate: 1.0 mL/min
- Injection volume: 10 µL

Chromatographic system

- Agilent 1200 Series quaternary pump with vacuum degasser
- Agilent 1200 Series high-performance autosampler
- Agilent 1200 Series thermostated column compartment
- Agilent 1200 Series variable wavelength detector
- System control through Agilent ChemStation revision B.01.01



Components	k'	Ret Time (min)	Height (mAU)	Area (mAU*s)	n	USP T _r
Chlorogenic acid	2.549	4.259	226.89	1659.3	8065	0.98