

# Liquorice Root (*Radix et Rhizoma Glycyrrhizae*) – 甘草<sup>2</sup>

## Sample source

Commercially available Liquorice Root

## Chemical reference substances

Ammonium glycyrrhizinate (National Institute for the Control of Pharmaceutical and Biological Products, Batch number 0731-9704)

## Preparation of test solution

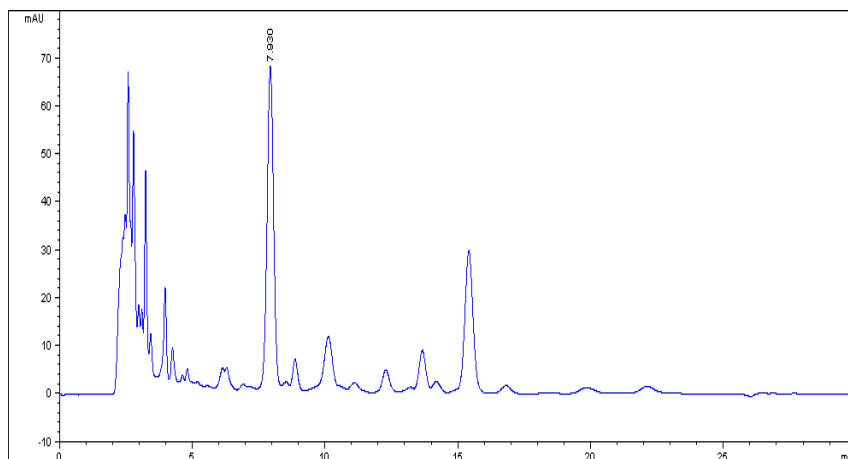
Accurately weigh 0.3 g of the powder in a 50 mL volumetric flask, add 45 mL of the mobile phase and treat ultrasonically for 30 minutes, take out and allow to cool, dilute with the mobile phase to volume and mix well, filter, use the filtrate as the test solution.

## Chromatographic conditions

- Column: ZORBAX SB C18 4.6×250 mm, 5 μm (880975-902)
- Column temperature: 25 °C
- Mobile phase: methanol-0.2mol/L ammonium acetate-glacial acetic acid (67:33:1)
- Detector wavelength: 250 nm
- Flow rate: 1.0 mL/min

## Chromatographic system

- Agilent 1200 Series quaternary pump with vacuum degasser
- Agilent 1200 Series high-performance autosampler
- Agilent 1200 Series thermostated column compartment
- Agilent 1200 Series variable wavelength detector
- System control through Agilent ChemStation revision B.01.01



Components	k'	Ret Time (min)	Height (mAU)	Area (mAU*s)	n	USP T <sub>r</sub>
Glycyrrhizinic acid	2.172	7.930	67.42	1149.4	5072	1.01