

Xiao'er Baibu Zhike Syrup (*Xiao'er Baibu Zhike Tangjiang*)

小儿百部止咳糖浆

Sample source

Commercially available Xiao'er Baibu Zhike Syrup

Chemical reference substances

Baicalin (National Institute for the Control of Pharmaceutical and Biological Products, Batch number: 110715-200212)

Preparation of test solution

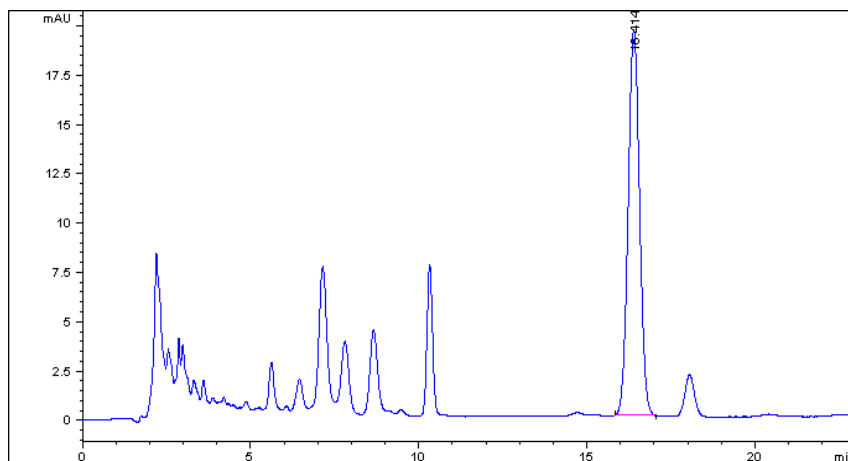
Accurately measure 2.0 mL of the syrup to a 100 mL volumetric flask, dissolve and dilute to volume with water, mix well. Accurately measure 10 mL to a 50 mL volumetric flask, dilute to volume with 65 % methanol and mix well, filter, and use the filtrate as the test solution.

Chromatographic conditions

- Column: ZORBAX SB C18 4.6×250 mm, 5 μm (880975-902)
- Column temperature: 25 °C
- Mobile phase: methanol-0.2 % phosphoric acid (45:55)
- Detector wavelength: 276nm
- Flow rate: 1.0 mL/min
- Injection volume: 10 μL

Chromatographic system

- Agilent 1200 Series quaternary pump with vacuum degasser
- Agilent 1200 Series high-performance autosampler
- Agilent 1200 Series thermostated column compartment
- Agilent 1200 Series diode-array detector
- System control through Agilent ChemStation revision B.01.01



Components	k'	Ret Time (min)	Height (mAU)	Area (mAU*s)	n	USP T _r
Baicalin	5.566	16.414	19.56	463.0	11102	1.03