

Danning Tablets (*Danning Pian*) – 胆宁片

Sample source

Commercially available Danning Tablets

Chemical reference substances

1. Emodin, 2. Chrysophanol
(National Institute for the Control of Pharmaceutical and Biological Products, Batch number 1. 110756-200210, 2. 110796-200309)

Preparation of test solution

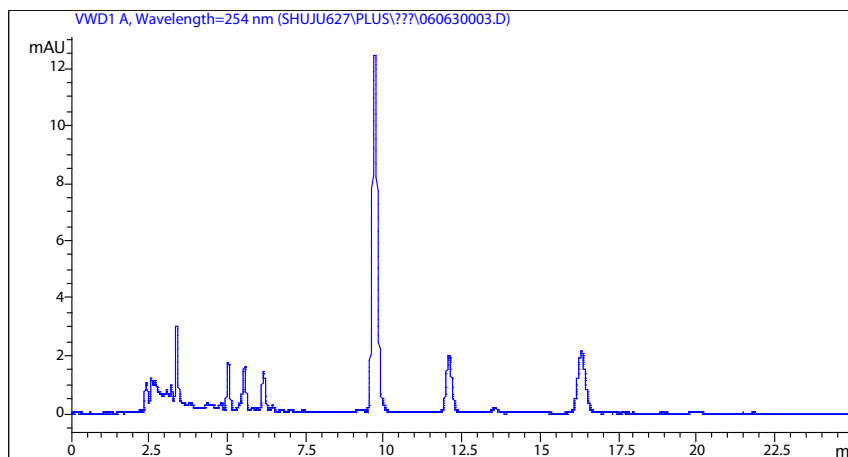
Remove the coating of 10 tablets, grind to a fine powder, accurately weigh 0.35 g of the powder and place in a round-bottomed flask. Add 10 mL 30% solution of sulfuric acid, and heat under reflux with successive 30 mL, 20 mL, 20 mL of chloroform for 2 hours, 30 minutes and 30 minutes respectively. Combine the chloroform solution and wash with a quantity of water, transfer the chloroform solution to a 100 mL volumetric flask, dilute with chloroform to volume, mix thoroughly. Accurately measure 3 mL of the chloroform solution in a 10 mL volumetric flask, evaporate to dryness, dissolve the residue in about 9 mL of methanol, treat ultrasonically for 3 minutes, dilute with methanol to volume, mix thoroughly and filter, use the filtrate as the test solution.

Chromatographic conditions

- Column: ZORBAX Eclipse Plus C18, 4.6×250mm, 5µm (959990-902)
- Column temperature: 30 °C
- Mobile phase: methanol-0.1 % phosphoric acid (80:20)
- Detector wavelength: 254 nm
- Flow rate: 1.0 mL/min

Chromatographic system

- Agilent 1200 Series quaternary pump with vacuum degasser
- Agilent 1200 Series high-performance autosampler
- Agilent 1200 Series thermostated column compartment
- Agilent 1200 Series variable wavelength detector
- System control through Agilent ChemStation revision B.01.01



| Components | k' | Ret Time (min) | Height (mAU) | Area (mAU*s) | n | USP T _r |
|--------------|-------|----------------|--------------|--------------|-------|--------------------|
| Emodin | 2.886 | 9.715 | 12.29 | 139.3 | 17128 | 1.07 |
| Chrysophanol | 3.833 | 12.082 | 1.90 | 27.7 | 21457 | 1.04 |